

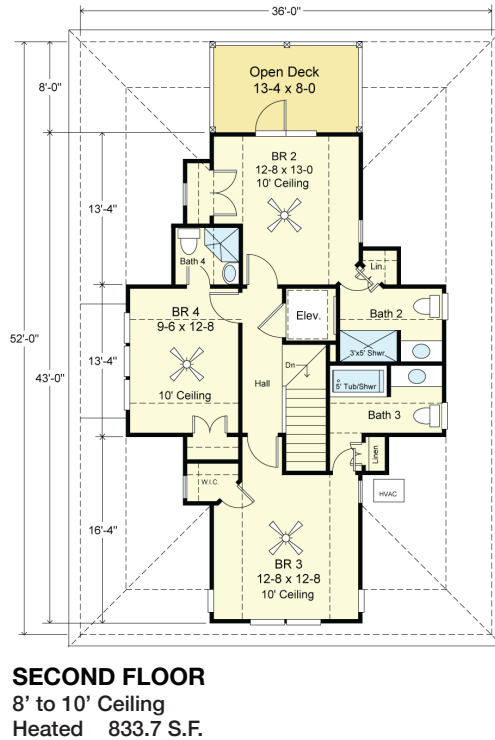
# CAPE POINT 2429-4E



**STREET FRONT**



**RIGHT SIDE**



## COASTAL DESIGNS

cottages for coastal living

web: [coastaldesigns.com](http://coastaldesigns.com)  
email: [designer@coastaldesigns.com](mailto:designer@coastaldesigns.com)

Copyright © 2003-2024, all rights reserved by Coastal Designs. This plan depicts a sketch plan, designer reserves the right to make changes and modifications for improvements. Measurements and dimensions are approximate.

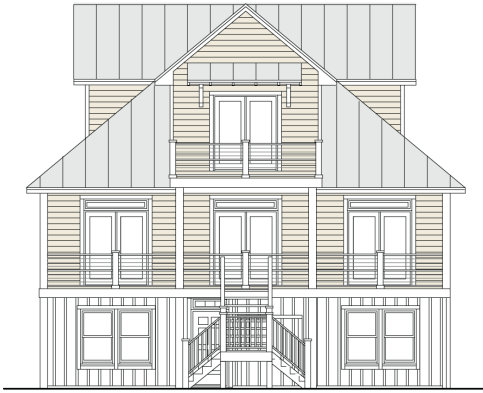
## CAPE POINT 2429-4E

2,429.4 to 2,838.1 Square Feet Living Area  
36'-0" wide x 52'-0" deep x 34'-8" high

Ground Floor	299.7 S.F. to 708.4 S.F.
1st Floor	1,296.0 S.F.
2nd Floor	833.7 S.F.
<b>Total Area</b>	<b>2,429.4 S.F. to 2,838.1 S.F.</b>

4-6 Bedrooms  
4 1/2 to 5 1/2 Baths  
Elevator  
3 Levels

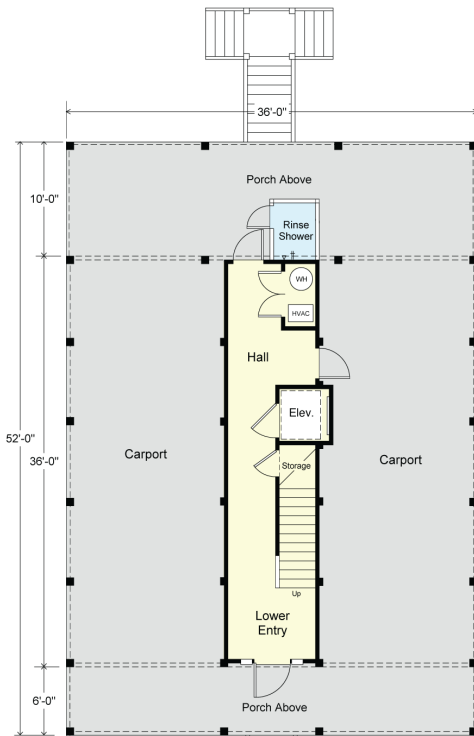
# CAPE POINT 2429-4E



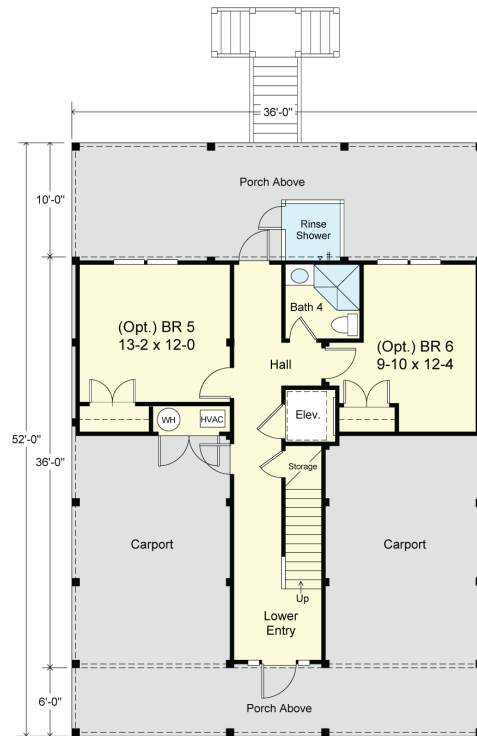
REAR



LEFT SIDE



**GROUND FLOOR**  
Heated Living Area  
299.7 S.F.  
Carport & Unheated  
996.3 S.F.



**OPTIONAL GROUND FLOOR**  
Heated Living Area  
708.4 S.F.  
Carport & Unheated  
587.6 S.F.

## COASTAL DESIGNS

cottages for coastal living

web: [coastaldesigns.com](http://coastaldesigns.com)  
email: [designer@coastaldesigns.com](mailto:designer@coastaldesigns.com)

Copyright © 2003-2024, all rights reserved by Coastal Designs.  
This plan depicts a sketch plan, designer reserves the right to make changes and modifications for improvements. Measurements and dimensions are approximate.

## CAPE POINT 2429-4E

2,429.4 to 2,838.1 Square Feet Living Area  
36'-0" wide x 52'-0" deep x 34'-8" high

Ground Floor	299.7 S.F. to 708.4 S.F.	4-6 Bedrooms
1st Floor	1,296.0 S.F.	4 1/2 to 5 1/2 Baths
2nd Floor	833.7 S.F.	Elevator
Total Area	2,429.4 S.F. to 2,838.1 S.F.	3 Levels