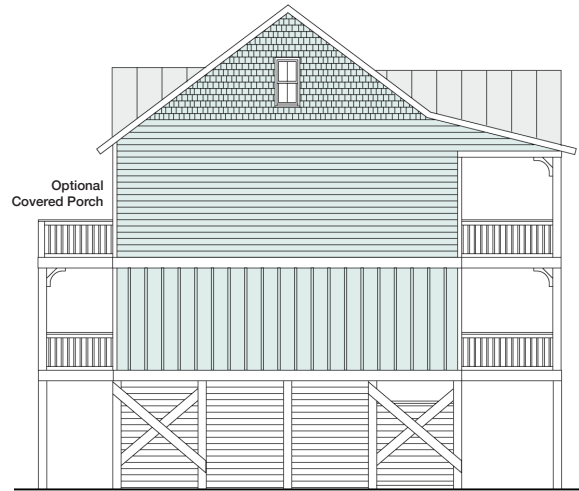


WRIGHTSVILLE 1792-5



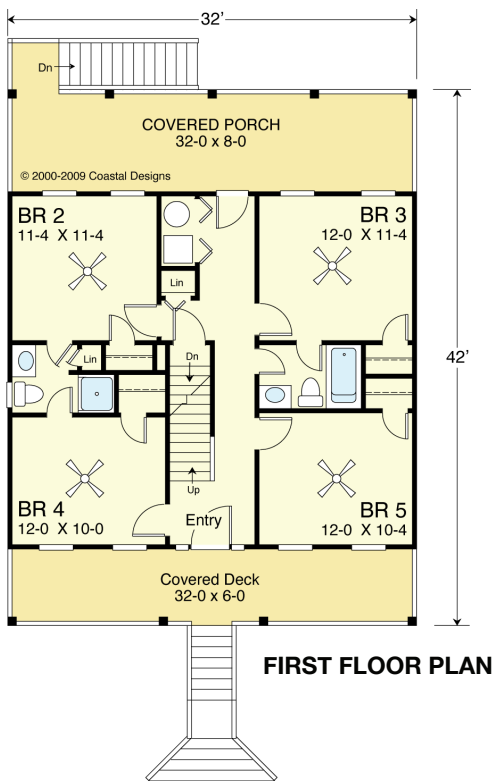
WATER FRONT

© 2000-2009 Coastal Designs

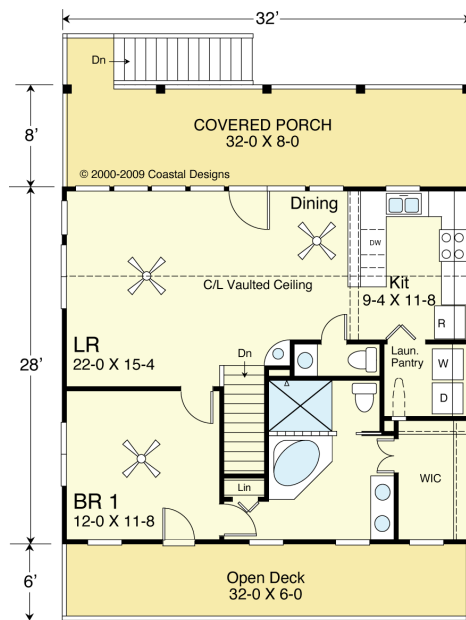


RIGHT SIDE

© 2000-2009 Coastal Designs



FIRST FLOOR PLAN



SECOND FLOOR PLAN

COASTAL DESIGNS

cottages for coastal living

web: coastaldesigns.com
 email: designer@coastaldesigns.com

Copyright © 2003-2024, all rights reserved by Coastal Designs.
 This plan depicts a sketch plan, designer reserves the right to make changes and modifications for improvements. Measurements and dimensions are approximate.

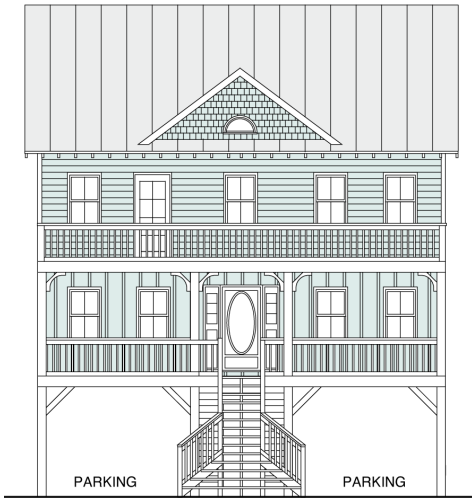
WRIGHTSVILLE 1792-5

1,792 Square Feet Living Area
 32'-0" wide x 46'-0" deep x 38'-8" high

Ground Floor (Unheated)	170.0 S.F.
1st Floor	896.0 S.F.
2nd Floor	896.0 S.F.
Total Area	1,792.0 S.F.

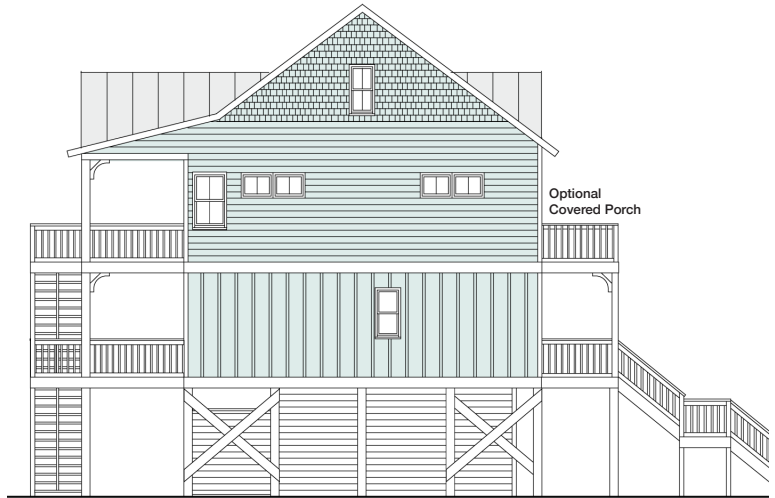
5 Bedrooms
 3 1/2 Baths
 Garage/Carport
 Accessible from
 Two Sides

WRIGHTSVILLE 1792-5



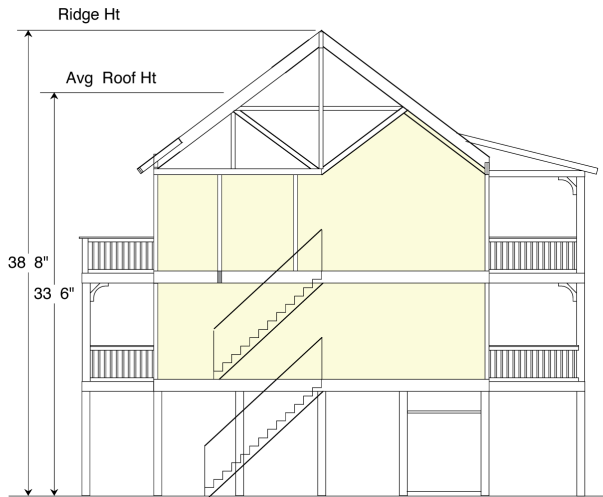
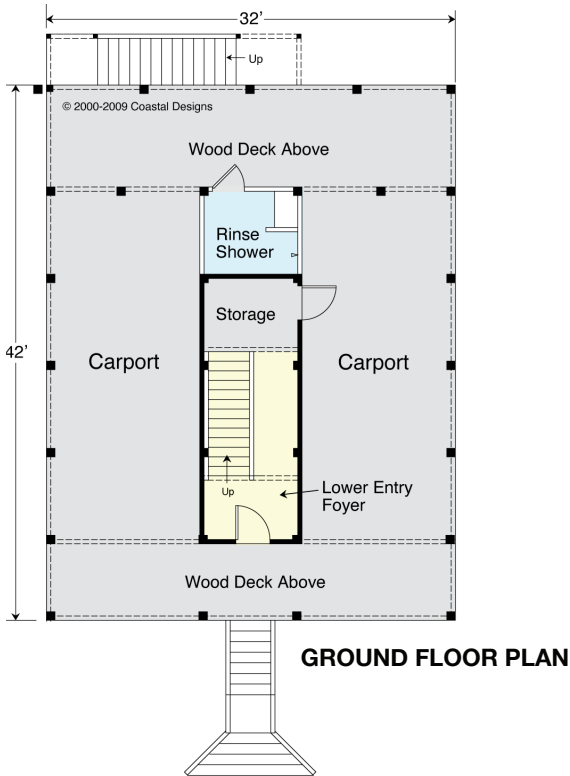
REAR

© 2000-2009 Coastal Designs



LEFT SIDE

© 2000-2009 Coastal Designs



SECTION SHOWING VAULTED CEILINGS

Note: Carport Entry can be switched from back to front as your lot dictates, with minor deck size and stair adjustments.

COASTAL DESIGNS

cottages for coastal living

web: coastaldesigns.com
 email: designer@coastaldesigns.com

Copyright © 2003-2024, all rights reserved by Coastal Designs. This plan depicts a sketch plan, designer reserves the right to make changes and modifications for improvements. Measurements and dimensions are approximate.

WRIGHTSVILLE 1792-5

1,792 Square Feet Living Area
 32'-0" wide x 46'-0" deep x 38'-8" high

Ground Floor (Unheated)	170.0 S.F.
1st Floor	896.0 S.F.
2nd Floor	896.0 S.F.
Total Area	1,792.0 S.F.

5 Bedrooms
 3 1/2 Baths
 Garage/Carport
 Accessible from
 Two Sides