

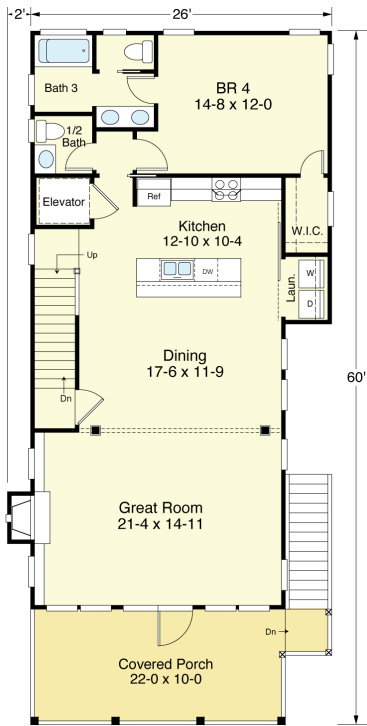
BEACHWOOD 2301-4E



STREET FRONT

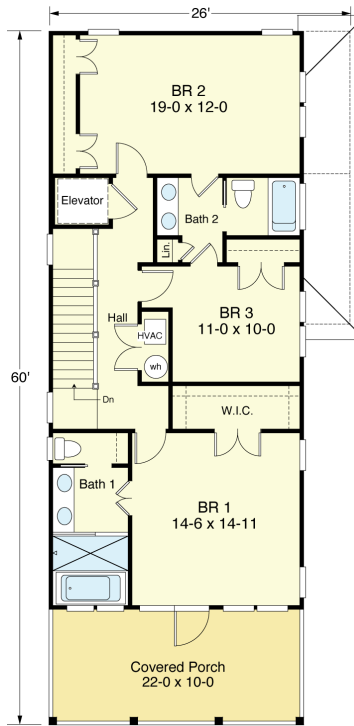


RIGHT SIDE



FIRST FLOOR PLAN

1,201.3 S.F.
9'-0" Ceiling Height



SECOND FLOOR PLAN

1,100.0 S.F.
9'-0" Ceiling Height

Impervious (Covered) Area	1,699.5 S.F.
Carport	1,041.3 S.F.
Storage	143.5 S.F.
1st Floor Living	1,201.3 S.F.
2nd Floor Living	1,100.0 S.F.
Total Living Area	2,301.3 S.F.

COASTAL DESIGNS

cottages for coastal living

web: coastaldesigns.com
email: designer@coastaldesigns.com

Copyright © 2003-2024, all rights reserved by Coastal Designs.
This plan depicts a sketch plan, designer reserves the right to make changes and modifications for improvements. Measurements and dimensions are approximate.

BEACHWOOD 2301-4E

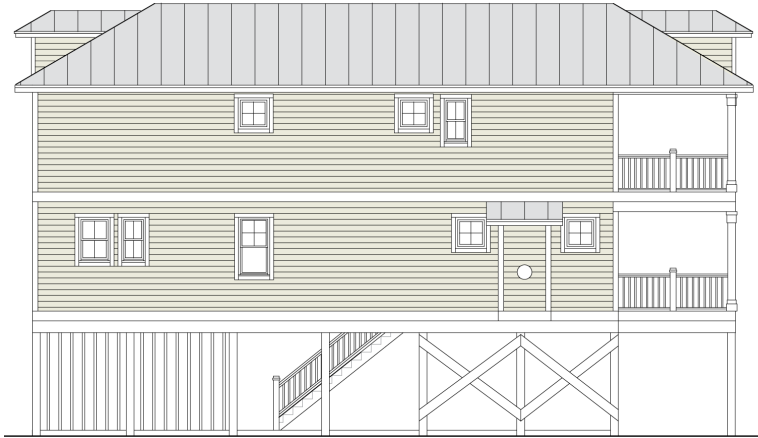
2,301 Square Feet Living Area
28'-0" wide x 60'-0" deep x 37'-6" high

1st Floor	1,201.3 S.F.	4 Bedrooms 3 Baths Elevator
2nd Floor	1,100.0 S.F.	
Total	2,301.3 S.F.	

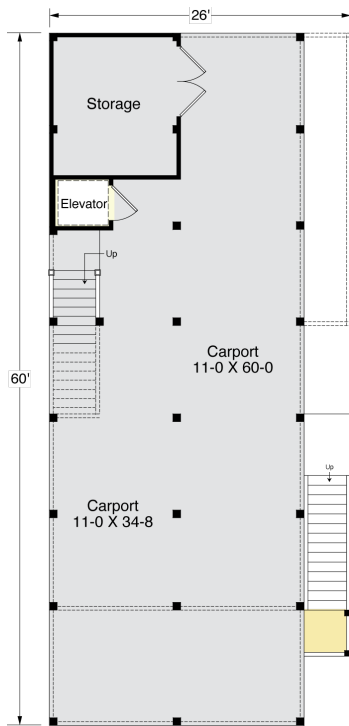
BEACHWOOD 2301-4E



REAR



LEFT SIDE



Impervious (Covered) Area	1,699.5 S.F.
Carport	1,041.3 S.F.
Storage	143.5 S.F.
1st Floor Living	1,201.3 S.F.
2nd Floor Living	1,100.0 S.F.
Total Living Area	2,301.3 S.F.

GROUND FLOOR PLAN

Carport 1,041.3 S.F., Storage 143.5 S.F.
 Footprint Area 1,484.0 S.F., Impervious (Covered) Area 1,699.5 S.F.
 9'-0" Ceiling Height

COASTAL DESIGNS

cottages for coastal living

web: coastaldesigns.com
 email: designer@coastaldesigns.com

Copyright © 2003-2024, all rights reserved by Coastal Designs.
 This plan depicts a sketch plan, designer reserves the right to make changes and modifications for improvements. Measurements and dimensions are approximate.

BEACHWOOD 2301-4E

2,301 Square Feet Living Area
 28'-0" wide x 60'-0" deep x 37'-6" high

1st Floor	1,201.3 S.F.	4 Bedrooms 3 Baths Elevator
2nd Floor	1,100.0 S.F.	
Total	2,301.3 S.F.	