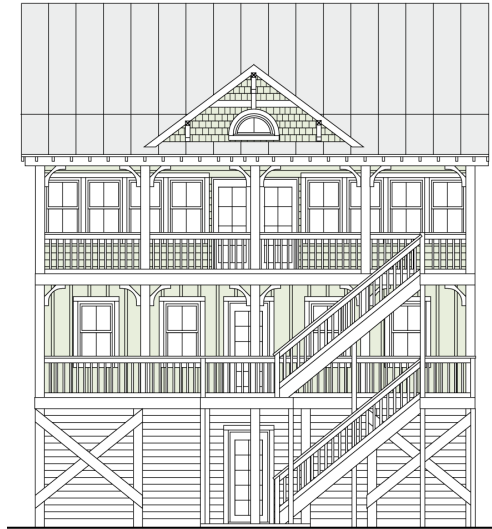


WRIGHTSVILLE 1792-4



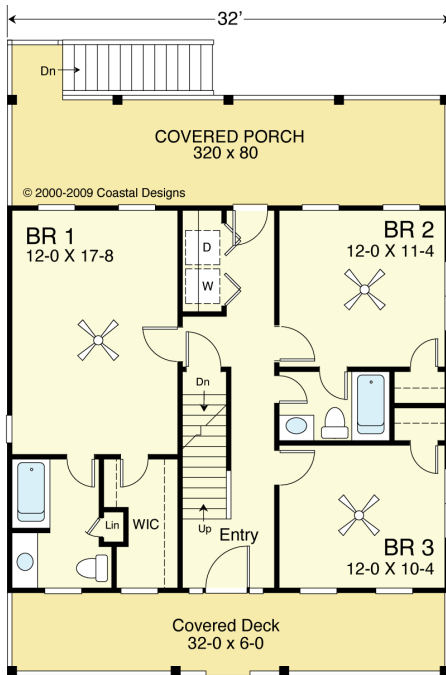
WATER FRONT

© 2000-2009 Coastal Designs

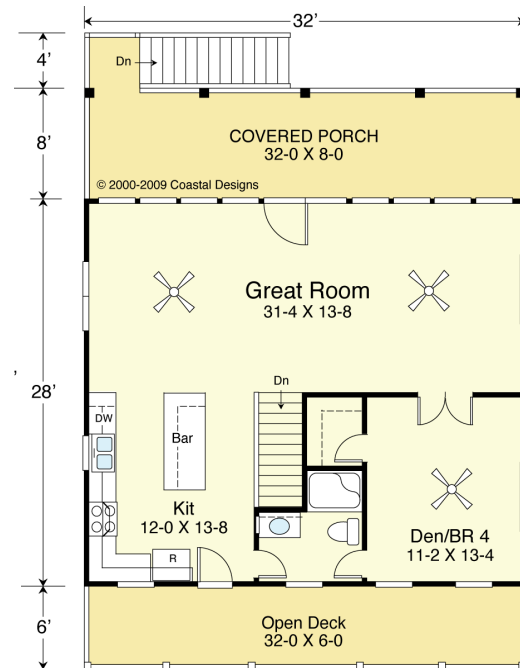


RIGHT SIDE

© 2000-2009 Coastal Designs



FIRST FLOOR PLAN



SECOND FLOOR PLAN

COASTAL DESIGNS

cottages for coastal living

web: coastaldesigns.com
 email: designer@coastaldesigns.com

Copyright © 2003-2024, all rights reserved by Coastal Designs.
 This plan depicts a sketch plan, designer reserves the right to make changes and modifications for improvements. Measurements and dimensions are approximate.

WRIGHTSVILLE 1792-4

1,792 Square Feet Living Area
 32'-0" wide x 46'-0" deep x 38'-2" high

Ground Floor (Unheated)	170.0 S.F.
1st Floor	896.0 S.F.
2nd Floor	896.0 S.F.
Total Area	1,792.0 S.F.

4 Bedrooms
 3 Baths
 Garage/Carport
 Accessible from
 Two Sides

WRIGHTSVILLE 1792-4



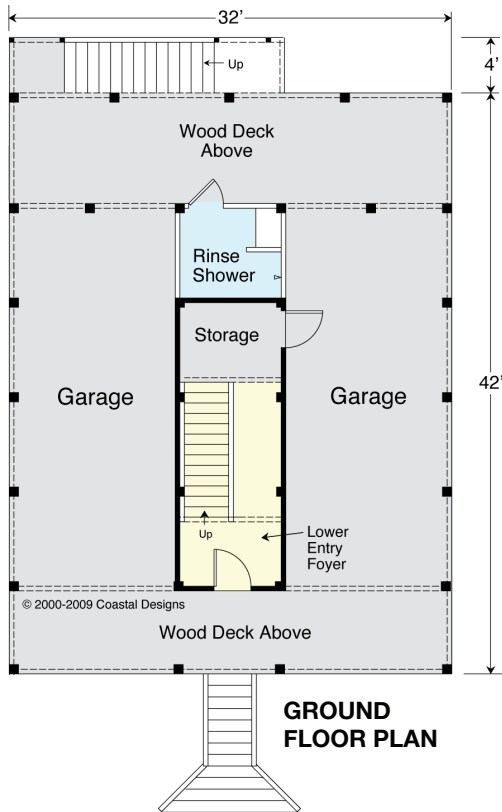
REAR

© 2000-2009 Coastal Designs



LEFT SIDE

© 2000-2009 Coastal Designs



COASTAL DESIGNS

cottages for coastal living

web: coastaldesigns.com
 email: designer@coastaldesigns.com

Copyright © 2003-2024, all rights reserved by Coastal Designs.
 This plan depicts a sketch plan, designer reserves the right to make changes and modifications for improvements. Measurements and dimensions are approximate.

WRIGHTSVILLE 1792-4

1,792 Square Feet Living Area
 32'-0" wide x 46'-0" deep x 38'-8" high

Ground Floor (Unheated)	170.0 S.F.
1st Floor	896.0 S.F.
2nd Floor	896.0 S.F.
Total Area	1,792.0 S.F.

4 Bedrooms
 3 Baths
 Garage/Carport
 Accessible from
 Two Sides