

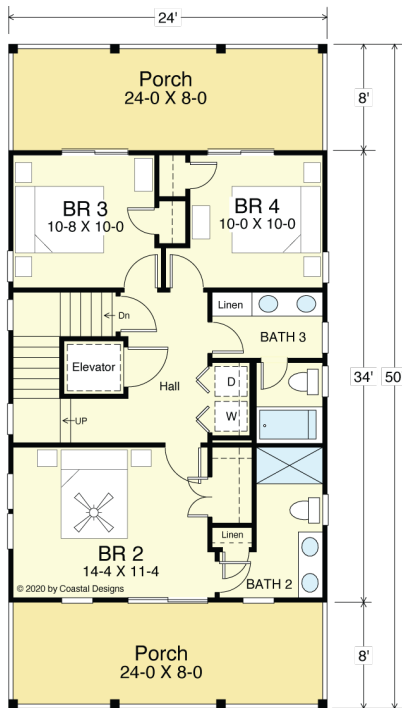
ISLANDER 2489-4E



STREET FRONT

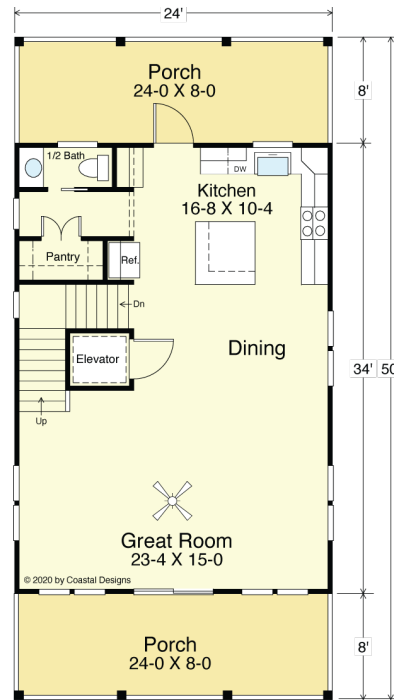


RIGHT SIDE



FIRST FLOOR PLAN

816.0 S.F.
8'-0" Ceiling Heights



SECOND FLOOR PLAN

816.0 S.F.
9'-0" Flat Ceiling Heights

COASTAL DESIGNS

cottages for coastal living

web: coastaldesigns.com
email: designer@coastaldesigns.com

Copyright © 2003-2024, all rights reserved by Coastal Designs. This plan depicts a sketch plan, designer reserves the right to make changes and modifications for improvements. Measurements and dimensions are approximate.

ISLANDER 2489-4E

2,488.9 Square Feet Living Area
24'-0" wide x 50'-0" deep x 40'-10" high

Ground Floor	184.0 S.F.
1st Floor	816.0 S.F.
2nd Floor	816.0 S.F.
3rd Floor	672.8 S.F.
Total Area (Heated)	2,488.8 S.F.

4 Bedrooms
3 1/2 Baths
Elevator

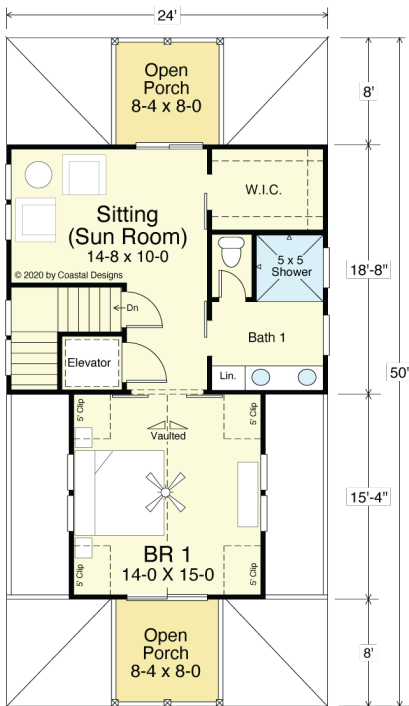
ISLANDER 2489-4E



REAR



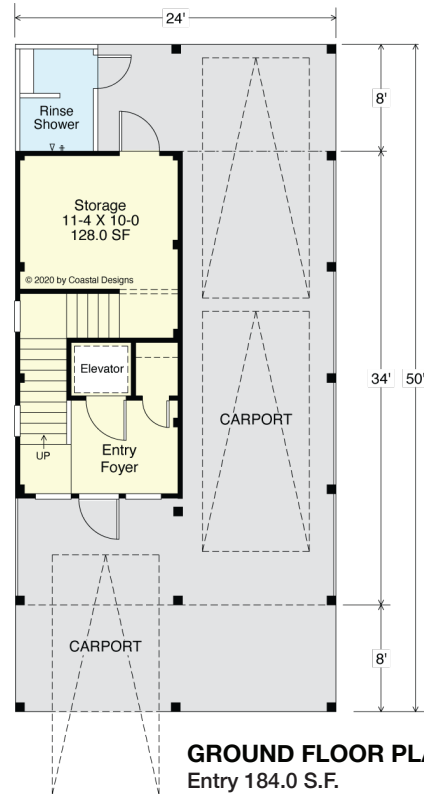
LEFT SIDE



THIRD FLOOR PLAN

672.8 S.F.

8'-0" Flat + Vaulted Ceiling Heights



GROUND FLOOR PLAN

Entry 184.0 S.F.

Storage 131.5 S.F.

COASTAL DESIGNS

cottages for coastal living

web: coastaldesigns.com

email: designer@coastaldesigns.com

Copyright © 2003-2024, all rights reserved by Coastal Designs. This plan depicts a sketch plan, designer reserves the right to make changes and modifications for improvements. Measurements and dimensions are approximate.

ISLANDER 2489-4E

2,488.9 Square Feet Living Area

24'-0" wide x 50'-0" deep x 40'-10" high

Ground Floor	184.0 S.F.
1st Floor	816.0 S.F.
2nd Floor	816.0 S.F.
3rd Floor	672.8 S.F.
Total Area (Heated)	2,488.8 S.F.

4 Bedrooms
3 1/2 Baths
Elevator