

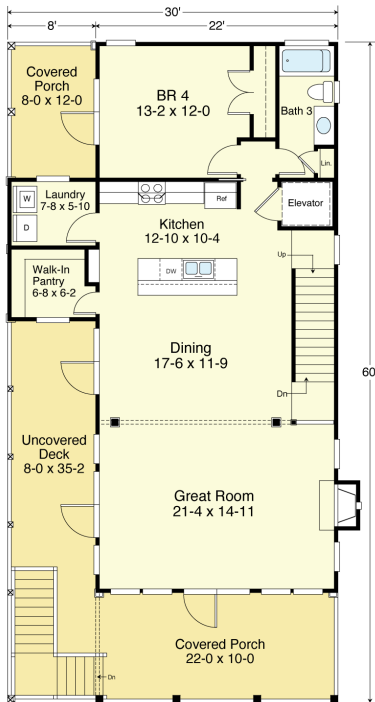
BEACHWOOD 2304-4E



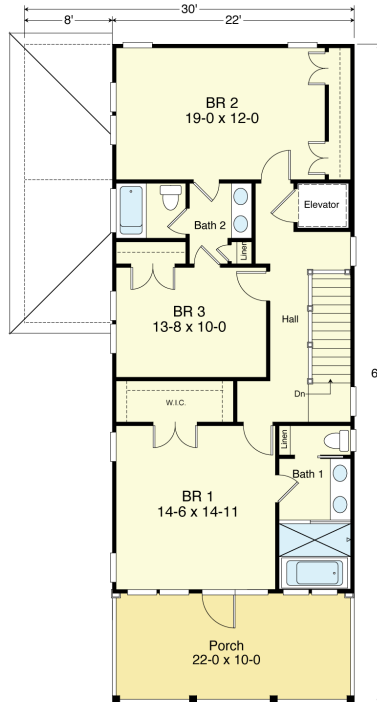
STREET FRONT



RIGHT SIDE



FIRST FLOOR PLAN
1,204.3 S.F.
9'-0" Ceiling Height



SECOND FLOOR PLAN
1,100.0 S.F.
9'-0" Ceiling Height

Footprint Area (30' x 60')	1,800.0 S.F.
Ground Floor "Outdoor Room"	745.0 S.F.
Garage & Storage	759.9 S.F.
1st Floor Living	1,204.0 S.F.
2nd Floor Living	1,100.0 S.F.
Total Living Area	2,304.0 S.F.

COASTAL DESIGNS

cottages for coastal living

web: coastaldesigns.com
email: designer@coastaldesigns.com

Copyright © 2003-2024, all rights reserved by Coastal Designs.
This plan depicts a sketch plan, designer reserves the right to make changes and modifications for improvements. Measurements and dimensions are approximate.

BEACHWOOD 2304-4E

2,304 Square Feet Living Area
30'-0" wide x 60'-0" deep x 37'-6" high

1st Floor	1,204.0 S.F.	4 Bedrooms 3 Baths Elevator
2nd Floor	1,100.0 S.F.	
Total	2,304.0 S.F.	

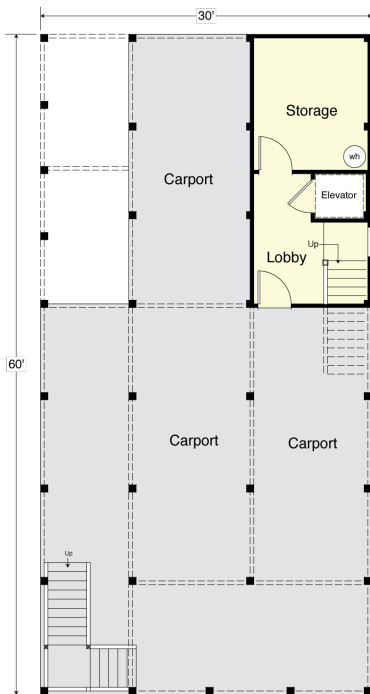
BEACHWOOD 2304-4E



REAR



LEFT SIDE



GROUND FLOOR PLAN

Carport 1,045.0 S.F., Storage 137.5 S.F., Entry 135.7 S.F.
 Impervious (Covered) Area 1,800.0 S.F.
 9'-0" Ceiling Height

COASTAL DESIGNS

cottages for coastal living

web: coastaldesigns.com
 email: designer@coastaldesigns.com

Copyright © 2003-2024, all rights reserved by Coastal Designs.
 This plan depicts a sketch plan, designer reserves the right to make changes and modifications for improvements. Measurements and dimensions are approximate.

BEACHWOOD 2304-4E

2,304 Square Feet Living Area
 30'-0" wide x 60'-0" deep x 37'-6" high

1st Floor	1,204.0 S.F.	4 Bedrooms 3 Baths Elevator
2nd Floor	1,100.0 S.F.	
Total	2,304.0 S.F.	