

SEA RAY 3 (2007-4)



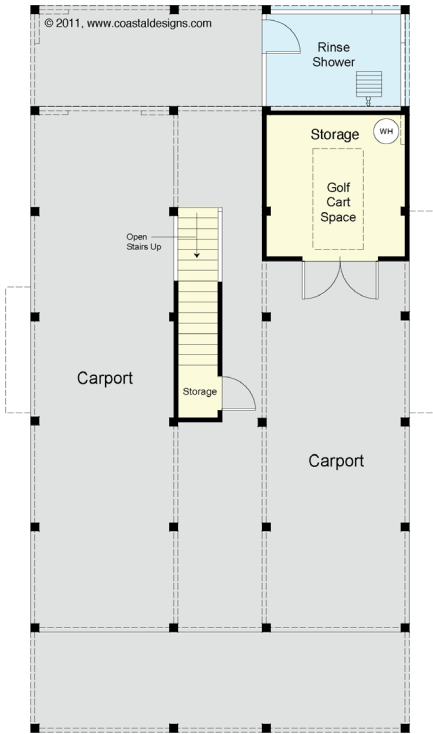
FRONT (A)

© 2012 www.coastaldesigns.com



RIGHT SIDE

© 2011 www.coastaldesigns.com



GROUND FLOOR PLAN
9' Ceilings



FIRST FLOOR PLAN
Living Area 1,395.3 S.F.
Porches 386.6 S.F.
9' Ceilings

COASTAL DESIGNS

cottages for coastal living

web: coastaldesigns.com
email: designer@coastaldesigns.com

Copyright © 2003-2024, all rights reserved by Coastal Designs.
This plan depicts a sketch plan, designer reserves the right to make changes and modifications for improvements. Measurements and dimensions are approximate.

SEA RAY 3 (2007-4)

2,007.9 Square Feet Living Area
34'-0" wide x 57'-8" deep x 35'-2" high

1st Floor	1,395.3 S.F.
2nd Floor	612.6 S.F.
Total	2,007.9 S.F.

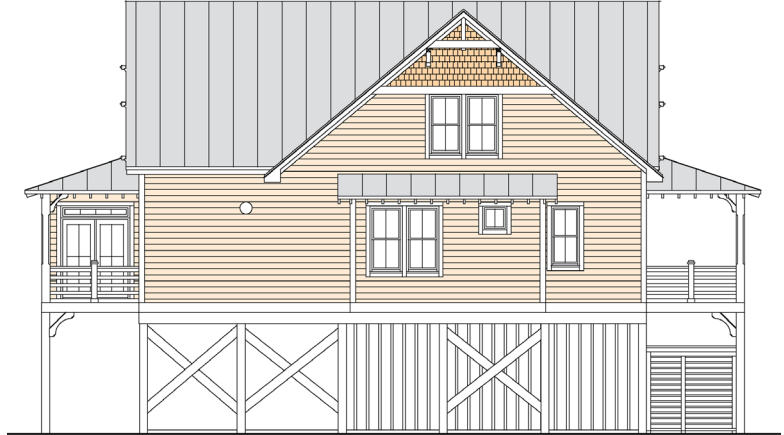
4 Bedrooms
3-4 Baths
Optional Bonus Room

SEA RAY 3 (2007-4)



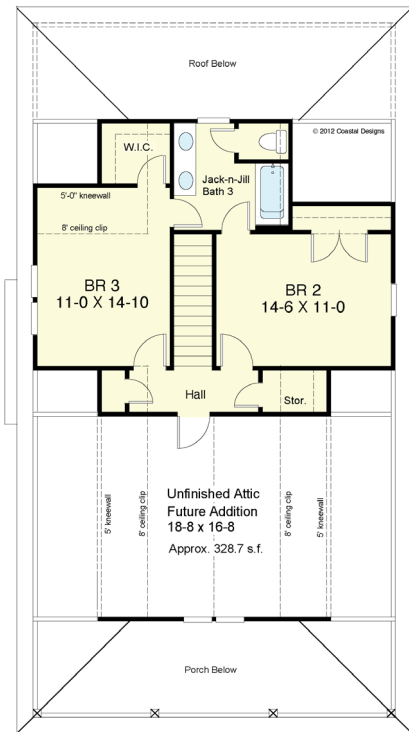
REAR

© 2011 www.coastaldesigns.com



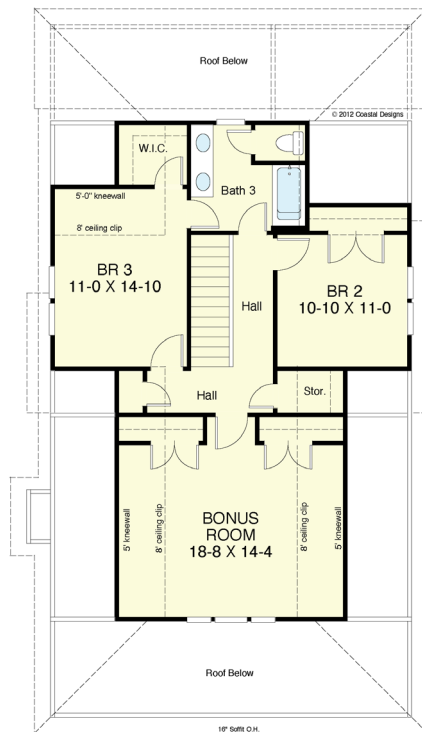
LEFT SIDE

© 2011 www.coastaldesigns.com



SECOND FLOOR PLAN

612.6 S.F.
8' + Vaulted Ceilings



SECOND FLOOR PLAN WITH BONUS ROOM

941.3 S.F.
8' + Vaulted Ceilings

COASTAL DESIGNS

cottages for coastal living

web: coastaldesigns.com
email: designer@coastaldesigns.com

Copyright © 2003-2024, all rights reserved by Coastal Designs.
This plan depicts a sketch plan, designer reserves the right to make changes and modifications for improvements. Measurements and dimensions are approximate.

SEA RAY 3 (2007-4)

2,007.9 Square Feet Living Area
34'-0" wide x 57'-8" deep x 35'-2" high

1st Floor	1,395.3 S.F.
2nd Floor	612.6 S.F.
Total	2,007.9 S.F.

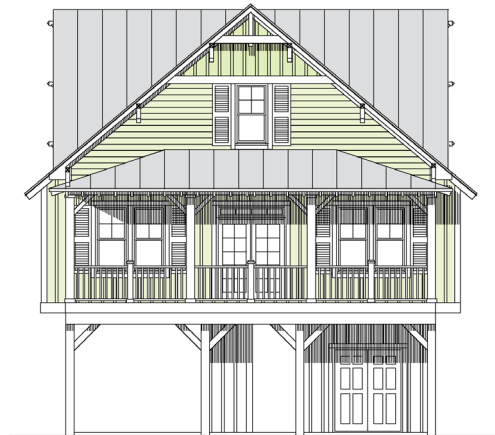
4 Bedrooms
3-4 Baths
Optional Bonus Room

SEA RAY 3 (2007-4)



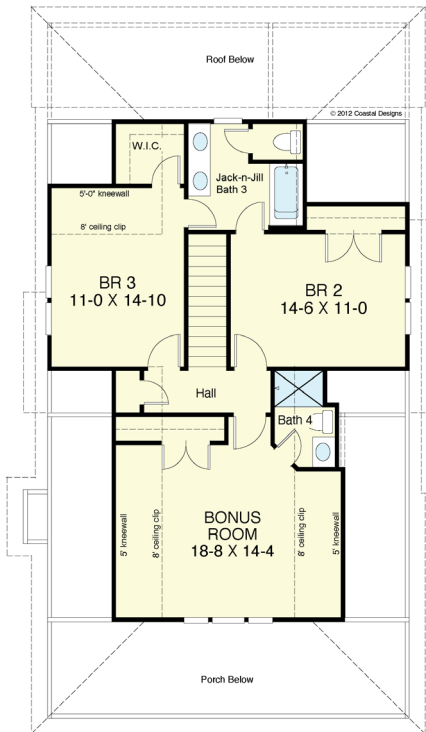
FRONT (B)

© 2012, www.coastaldesigns.com



FRONT (C)

© 2012 www.coastaldesigns.com



**SECOND FLOOR PLAN WITH BONUS ROOM
AND 3/4 BATH 4**

941.3 S.F.
8' + Vaulted Ceilings

COASTAL DESIGNS

cottages for coastal living

web: coastaldesigns.com
email: designer@coastaldesigns.com

Copyright © 2003-2024, all rights reserved by Coastal Designs.
This plan depicts a sketch plan, designer reserves the right to make changes and modifications for improvements. Measurements and dimensions are approximate.

SEA RAY 3 (2007-4)

2,007.9 Square Feet Living Area
34'-0" wide x 57'-8" deep x 35'-2" high

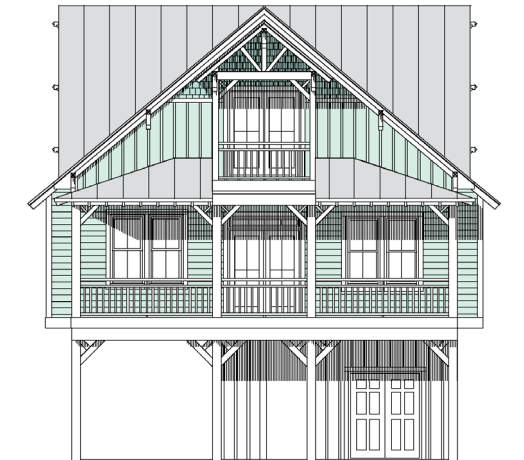
1st Floor	1,395.3 S.F.
2nd Floor	612.6 S.F.
Total	2,007.9 S.F.

4 Bedrooms
3-4 Baths
Optional Bonus Room

SEA RAY 3 (2007-4)



FRONT (D)



FRONT (E)

COASTAL DESIGNS

cottages for coastal living

web: coastaldesigns.com
email: designer@coastaldesigns.com

Copyright © 2003-2024, all rights reserved by Coastal Designs.
This plan depicts a sketch plan, designer reserves the right to make changes and modifications for improvements. Measurements and dimensions are approximate.

SEA RAY 3 (2007-4)

2,007.9 Square Feet Living Area
34'-0" wide x 57'-8" deep x 35'-2" high

1st Floor	1,395.3 S.F.
2nd Floor	612.6 S.F.
Total	2,007.9 S.F.

4 Bedrooms
3-4 Baths
Optional Bonus Room