

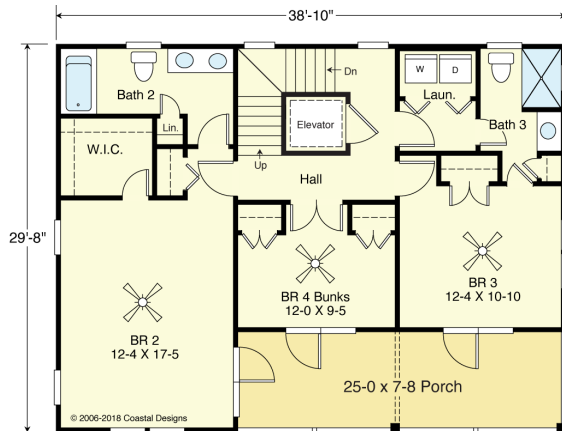
# HARKER'S ISLAND 2200-4E



**STREET FRONT**

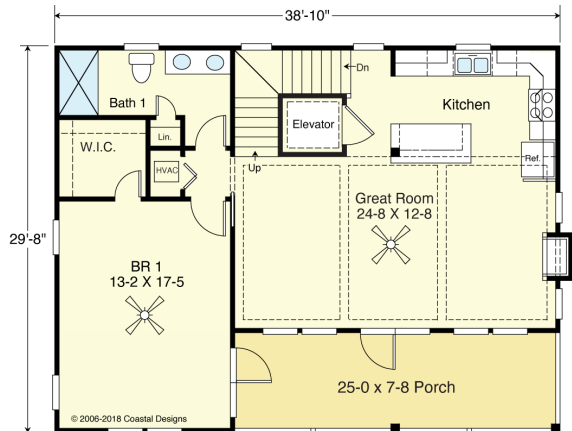


**RIGHT SIDE**



**FIRST FLOOR PLAN**

960.38 S.F.  
9' Flat Ceilings



**SECOND FLOOR PLAN**

960.38 S.F.  
9' Ceiling Heights

## COASTAL DESIGNS

cottages for coastal living

web: [coastaldesigns.com](http://coastaldesigns.com)  
email: [designer@coastaldesigns.com](mailto:designer@coastaldesigns.com)

Copyright © 2003-2024, all rights reserved by Coastal Designs.  
This plan depicts a sketch plan, designer reserves the right to make changes and modifications for improvements. Measurements and dimensions are approximate.

## HARKER'S ISLAND 2200-4E

2,200 Square Feet Living Area  
29'-8" wide x 38'-10" deep x 41'-1" high

|              |            |              |              |            |
|--------------|------------|--------------|--------------|------------|
| Ground Floor | 278.7 S.F. | Total Heated | 2,199.5 S.F. | 4 Bedrooms |
| 1st Floor    | 960.4 S.F. | Total Area   | 2,478.2 S.F. | 3 Baths    |
| 2nd Floor    | 960.4 S.F. |              |              | 3 Levels   |
| 3rd Floor    | 278.7 S.F. |              |              | Elevator   |

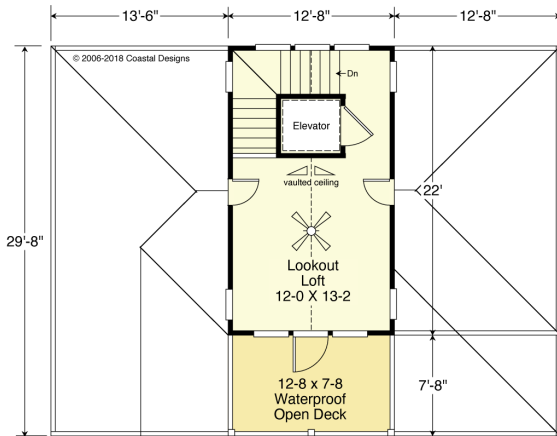
# HARKER'S ISLAND 2200-4E



**REAR**

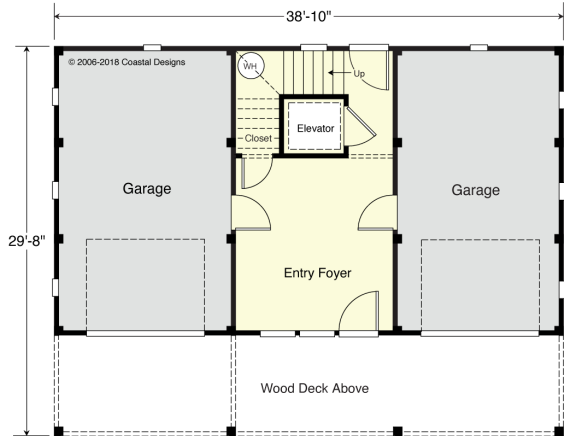


**LEFT SIDE**



**THIRD FLOOR PLAN  
(LOFT)**

278.65 S.F.  
8' + Vaulted Ceiling Heights



**GROUND FLOOR PLAN**

278.66 S.F. (Foyer)  
576.67 S.F. (Garages)  
854.33 S.F. (Enclosed)  
1,152 S.F. "Impervious" Coverage  
8' Ceiling Heights

## COASTAL DESIGNS

cottages for coastal living

web: [coastaldesigns.com](http://coastaldesigns.com)  
email: [designer@coastaldesigns.com](mailto:designer@coastaldesigns.com)

Copyright © 2003-2024, all rights reserved by Coastal Designs.  
This plan depicts a sketch plan, designer reserves the right to make changes and modifications for improvements. Measurements and dimensions are approximate.

## HARKER'S ISLAND 2200-4E

2,200 Square Feet Living Area  
29'-8" wide x 38'-10" deep x 41'-1" high

|              |            |              |              |   |
|--------------|------------|--------------|--------------|---|
| Ground Floor | 278.7 S.F. | Total Heated | 2,199.5 S.F. | 4 Bedrooms<br>3 Baths<br>3 Levels<br>Elevator |
| 1st Floor    | 960.4 S.F. | Total Area   | 2,478.2 S.F. |   |
| 2nd Floor    | 960.4 S.F. |              |              |   |
| 3rd Floor    | 278.7 S.F. |              |              |   |