

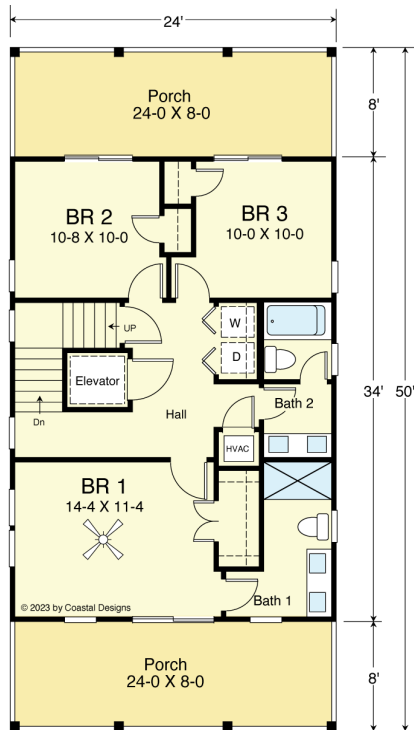
# DRIFTWOOD 1632-3E



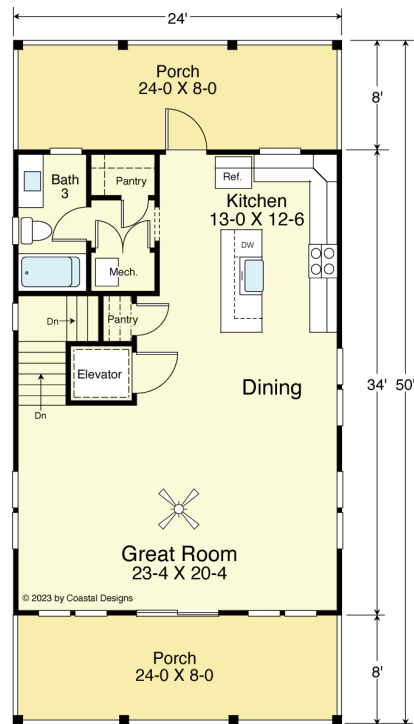
**STREET FRONT**



**RIGHT SIDE**



**FIRST FLOOR PLAN**  
816.0 SF  
8'-0" Ceilings



**SECOND FLOOR PLAN**  
816.0 S.F.  
9'-0" Flat Ceilings

## COASTAL DESIGNS

cottages for coastal living

web: [coastaldesigns.com](http://coastaldesigns.com)  
email: [designer@coastaldesigns.com](mailto:designer@coastaldesigns.com)

Copyright © 2003-2024, all rights reserved by Coastal Designs. This plan depicts a sketch plan, designer reserves the right to make changes and modifications for improvements. Measurements and dimensions are approximate.

## DRIFTWOOD 1632-3E

1,632.0 Square Feet Living Area  
24'-0" wide x 50'-0" deep x 33'-6" high

Ground Floor	187.5 S.F.	3 Bedrooms 3 Baths Elevator
1st Floor	816.0 S.F.	
2nd Floor	816.0 S.F.	
<b>Total</b>	<b>1,632.0 S.F.</b>	

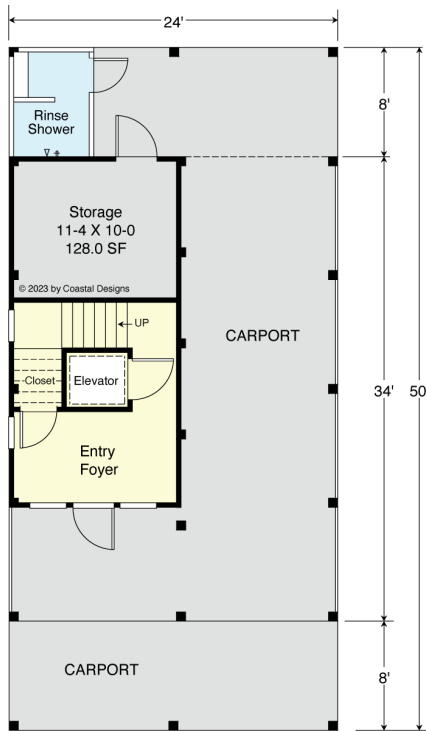
# DRIFTWOOD 1632-3E



**REAR**

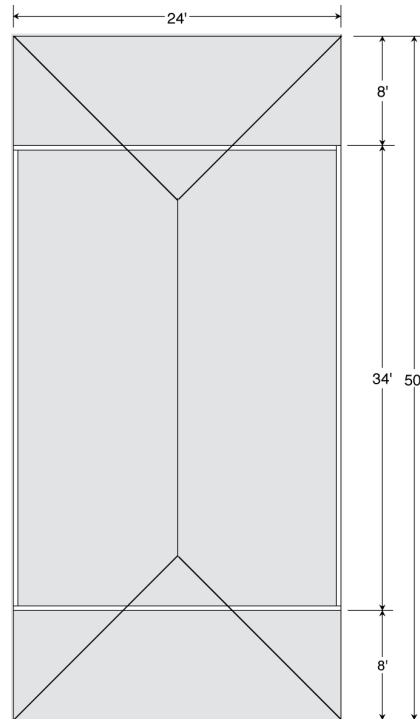


**LEFT SIDE**



**GROUND FLOOR PLAN**

Entry 187.5 SF  
Storage 133.3 SF



**ROOF**

9'-0" Flat Ceilings

## COASTAL DESIGNS

cottages for coastal living

web: [coastaldesigns.com](http://coastaldesigns.com)  
email: [designer@coastaldesigns.com](mailto:designer@coastaldesigns.com)

Copyright © 2003-2024, all rights reserved by Coastal Designs.  
This plan depicts a sketch plan, designer reserves the right to make changes and modifications for improvements. Measurements and dimensions are approximate.

## DRIFTWOOD 1632-3E

1,632.0 Square Feet Living Area  
24'-0" wide x 50'-0" deep x 33'-6" high

Ground Floor	187.5 S.F.	3 Bedrooms 3 Baths Elevator
1st Floor	816.0 S.F.	
2nd Floor	816.0 S.F.	
<b>Total</b>	<b>1,632.0 S.F.</b>	