

SURF 1754-4



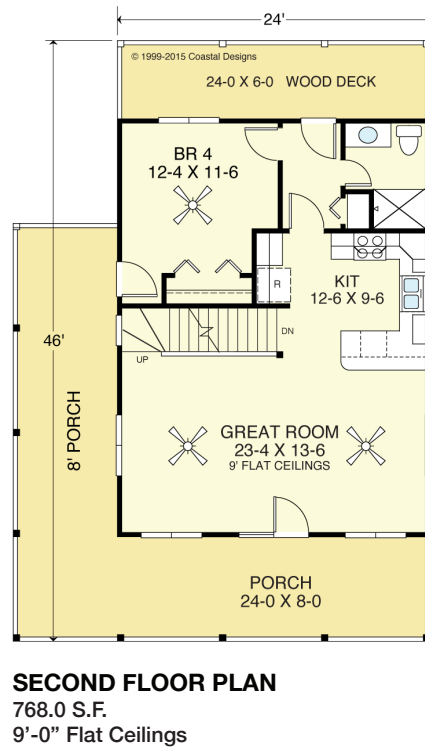
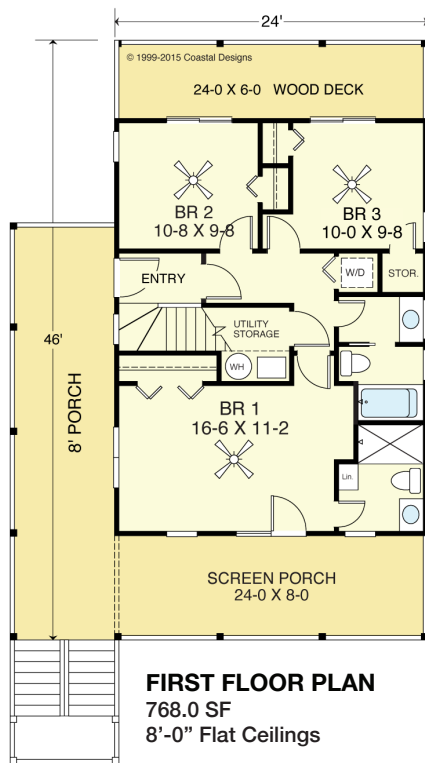
WATER FRONT

© 1999-2015 Coastal Designs



RIGHT SIDE

© 1999-2015 Coastal Designs



COASTAL DESIGNS

cottages for coastal living

web: coastaldesigns.com
email: designer@coastaldesigns.com

Copyright © 2003-2024, all rights reserved by Coastal Designs.
This plan depicts a sketch plan, designer reserves the right to make changes and modifications for improvements. Measurements and dimensions are approximate.

SURF 1754-4

1,754 Square Feet Living Area
32'-0" wide x 46'-0" deep x 40'-10" high

1st Floor	768.0 S.F.	4 Bedrooms 3 Baths Bonus Loft
2nd Floor	768.0 S.F.	
3rd Floor Loft	218.0 S.F.	
Total Area	1,754.0 S.F.	

SURF 1754-4



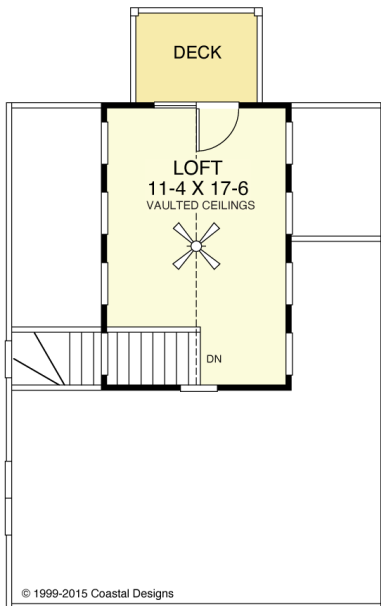
REAR

© 1999-2015 Coastal Designs



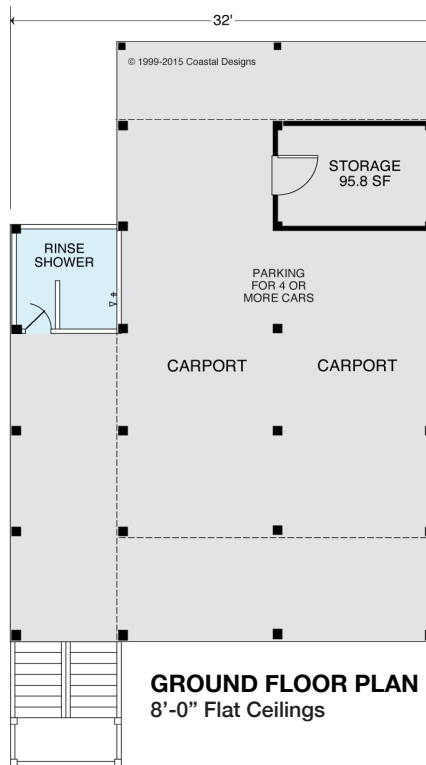
LEFT SIDE

© 1999-2015 Coastal Designs



THIRD FLOOR LOFT PLAN
218.0 SF
8'-0" Vaulted Ceilings

© 1999-2015 Coastal Designs



GROUND FLOOR PLAN
8'-0" Flat Ceilings

© 1999-2015 Coastal Designs

COASTAL DESIGNS

cottages for coastal living

web: coastaldesigns.com
email: designer@coastaldesigns.com

Copyright © 2003-2024, all rights reserved by Coastal Designs.
This plan depicts a sketch plan, designer reserves the right to make changes and modifications for improvements. Measurements and dimensions are approximate.

SURF 1754-4

1,754 Square Feet Living Area
32'-0" wide x 46'-0" deep x 40'-10" high

1st Floor	768.0 S.F.	4 Bedrooms 3 Baths Bonus Loft
2nd Floor	768.0 S.F.	
3rd Floor Loft	218.0 S.F.	
Total Area	1,754.0 S.F.	