

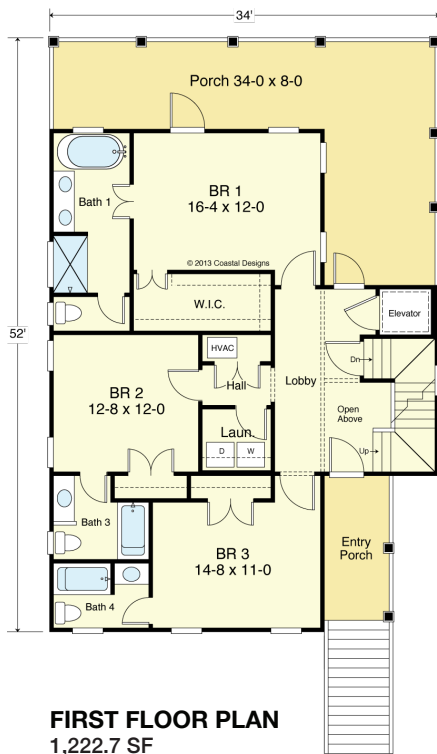
SNOW'S CUT 2445-4E



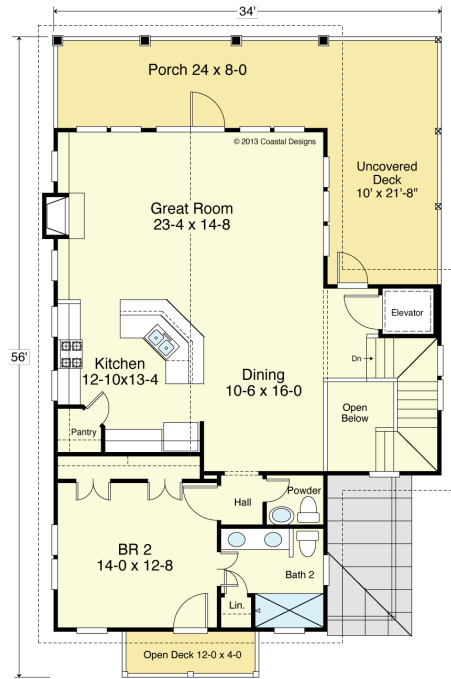
WATER FRONT



RIGHT SIDE



FIRST FLOOR PLAN
1,222.7 SF
9'-1 1/2" Flat Ceilings



SECOND FLOOR PLAN
1,222.7 S.F.
10' Flat Ceilings

COASTAL DESIGNS

cottages for coastal living

web: coastaldesigns.com
email: designer@coastaldesigns.com

Copyright © 2003-2024, all rights reserved by Coastal Designs.
This plan depicts a sketch plan, designer reserves the right to make changes and modifications for improvements. Measurements and dimensions are approximate.

SNOW'S CUT 2445-4E

2,445.4 to 2,627.6 Sq. Ft. Living Area
34'-0" wide x 56'-0" deep x 37'-3" high

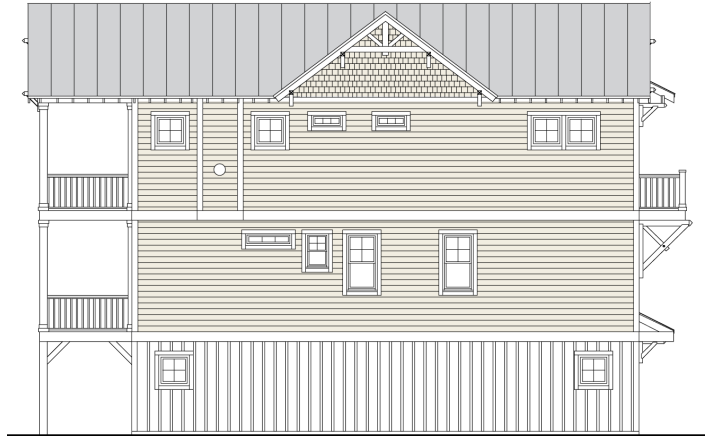
Entry & Elevator	172.2 S.F.	1st Floor	1,222.7 S.F.
Garages	533.0 S.F.	2nd Floor	1,222.7 S.F.
Storage	517.3 S.F.	Total Living Area	2,445.4 S.F.
Front Porch	76.0 S.F.	Total Enclosed Area	2,627.6 S.F.
Optional Back Porch	192.0 S.F.		

4 Bedrooms
4 1/2 to 5 1/2 Baths
Elevator
Optional Bonus Room (517.3 S.F.)

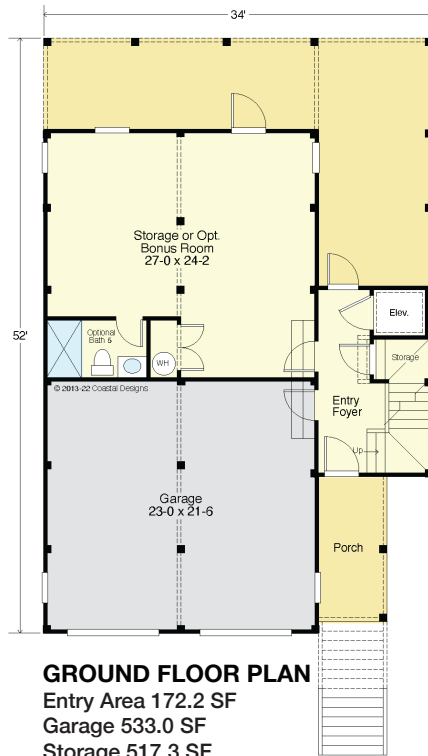
SNOW'S CUT 2445-4E



STREET FRONT



LEFT SIDE



GROUND FLOOR PLAN

Entry Area 172.2 SF
 Garage 533.0 SF
 Storage 517.3 SF
 Front Porch 76.0 SF
 Optional Back Porch 192.0 SF
 8'-1 1/2" Flat Ceiling Height

COASTAL DESIGNS

cottages for coastal living

web: coastaldesigns.com
 email: designer@coastaldesigns.com

Copyright © 2003-2024, all rights reserved by Coastal Designs.
 This plan depicts a sketch plan, designer reserves the right to make changes and modifications for improvements. Measurements and dimensions are approximate.

SNOW'S CUT 2445-4E

2,445.4 to 2,627.6 Sq. Ft. Living Area
 34'-0" wide x 56'-0" deep x 37'-3" high

Entry & Elevator	172.2 S.F.	1st Floor	1,222.7 S.F.	4 Bedrooms
Garages	533.0 S.F.	2nd Floor	1,222.7 S.F.	4 1/2 to 5 1/2 Baths
Storage	517.3 S.F.	Total Living Area	2,445.4 S.F.	Elevator
Front Porch	76.0 S.F.	Total Enclosed Area	2,627.6 S.F.	Optional Bonus Room (517.3 S.F.)
Optional Back Porch	192.0 S.F.			