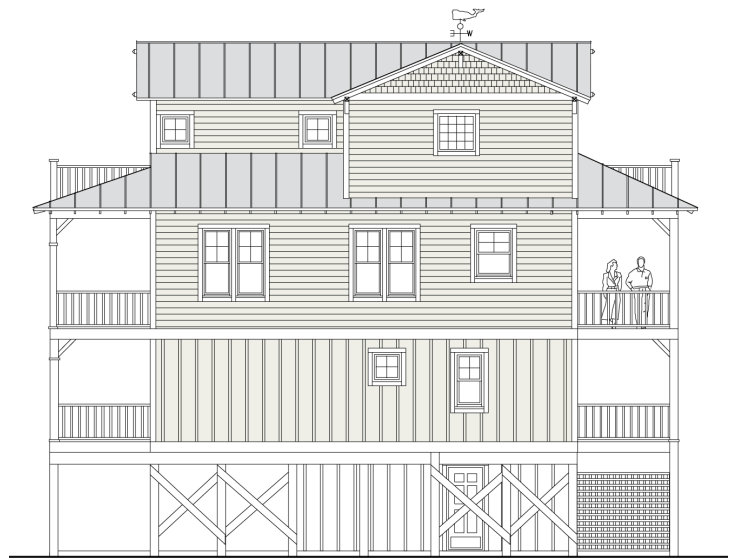


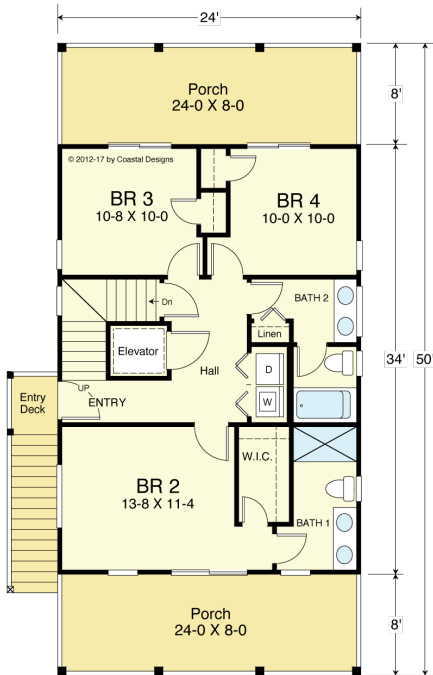
LOOKOUT 2479-4E



STREET FRONT



RIGHT SIDE



FIRST FLOOR PLAN

816.0 S.F.
8'-0" Ceiling Heights



SECOND FLOOR PLAN

816.0 S.F.
9'-0" Flat Ceiling Heights

COASTAL DESIGNS

cottages for coastal living

web: coastaldesigns.com
email: designer@coastaldesigns.com

Copyright © 2003-2024, all rights reserved by Coastal Designs. This plan depicts a sketch plan, designer reserves the right to make changes and modifications for improvements. Measurements and dimensions are approximate.

LOOKOUT 2479-4E

2,294.6 (Base) to 2,478.6 Square Feet Living Area
24'-0" wide x 50'-0" deep x 40'-10" high

Ground Floor	184.0 S.F.	4 Bedrooms 3 1/2 Baths Elevator
1st Floor	816.0 S.F.	
2nd Floor	816.0 S.F.	
3rd Floor	662.6 S.F.	
Total Area (Heated)	2,478.6 S.F.	

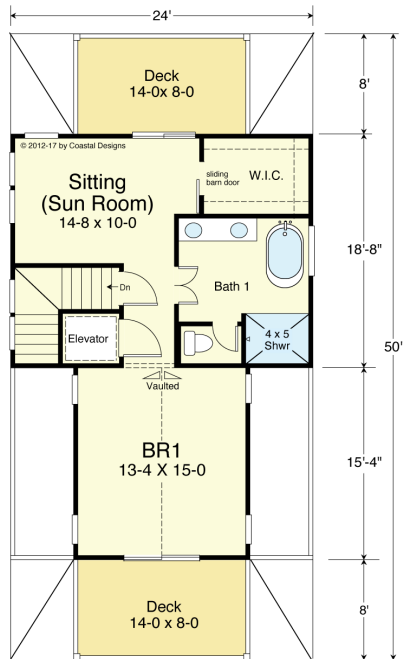
LOOKOUT 2479-4E



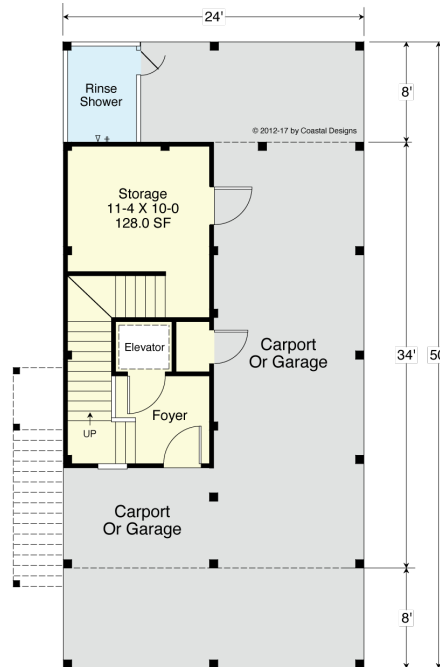
REAR



LEFT SIDE



THIRD FLOOR PLAN
662.6 S.F.
8'-0" Flat + Vaulted Ceiling Heights



GROUND FLOOR PLAN
Entry 184.0 S.F.
Storage 131.5 S.F.
8'-0" Ceiling Heights (+)

COASTAL DESIGNS

cottages for coastal living

web: coastaldesigns.com
email: designer@coastaldesigns.com

Copyright © 2003-2024, all rights reserved by Coastal Designs. This plan depicts a sketch plan, designer reserves the right to make changes and modifications for improvements. Measurements and dimensions are approximate.

LOOKOUT 2479-4E

2,294.6 (Base) to 2,478.6 Square Feet Living Area
24'-0" wide x 50'-0" deep x 40'-10" high

Ground Floor	184.0 S.F.	4 Bedrooms 3 1/2 Baths Elevator
1st Floor	816.0 S.F.	
2nd Floor	816.0 S.F.	
3rd Floor	662.6 S.F.	
Total Area (Heated)	2,478.6 S.F.	