

CAPE POINT 2429-5E



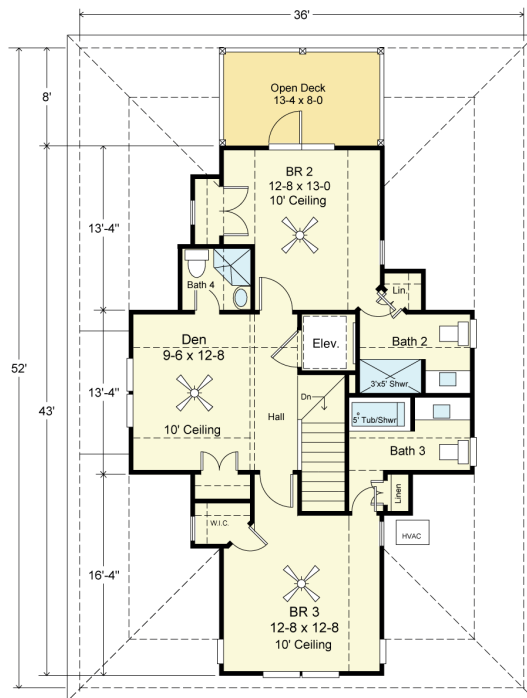
STREET FRONT



RIGHT SIDE



FIRST FLOOR PLAN
1,296.0 S.F. (Heated)
9'-0" Ceiling Heights



SECOND FLOOR PLAN
833.7 S.F. (Heated)
8'-0" to 10'-0" Ceiling Heights

COASTAL DESIGNS

cottages for coastal living

web: coastaldesigns.com
email: designer@coastaldesigns.com

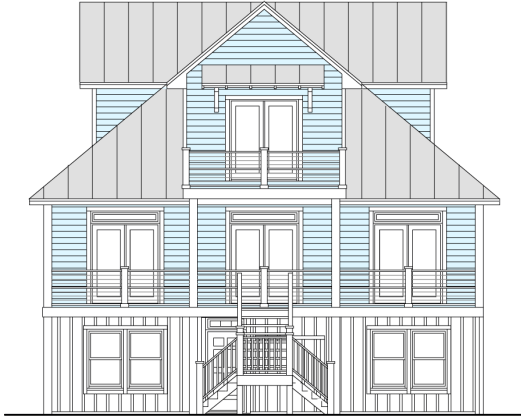
Copyright © 2003-2024, all rights reserved by Coastal Designs.
This plan depicts a sketch plan, designer reserves the right to make changes and modifications for improvements. Measurements and dimensions are approximate.

CAPE POINT 2429-5E

2,429.4 to 2,838.1 Square Feet Living Area
36'-0" wide x 52'-0" deep x 34'-8" high

Ground Floor Foyer	299.7 S.F. to 708.4 S.F.	3-5 Bedrooms
1st Floor	1,296.0 S.F.	3-4 Baths
2nd Floor	833.7 S.F.	3 Levels
Total Area	2,429.4 to 2,838.1 S.F.	Elevator

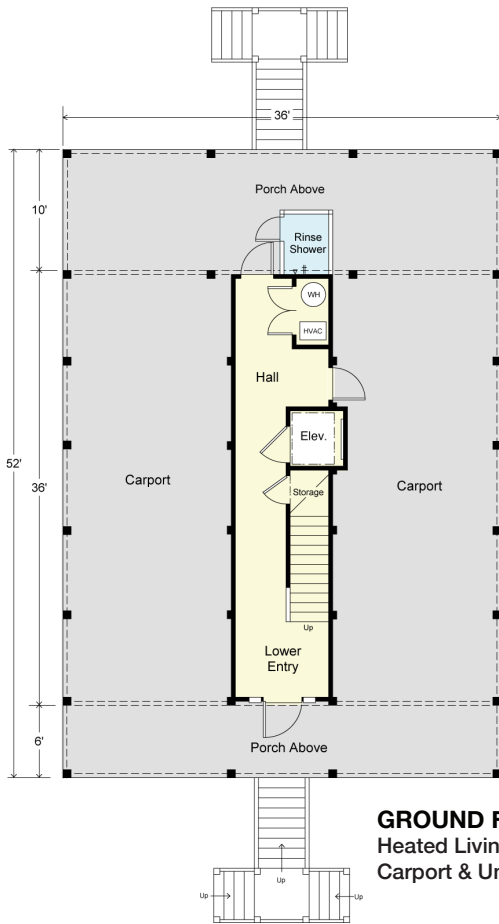
CAPE POINT 2429-5E



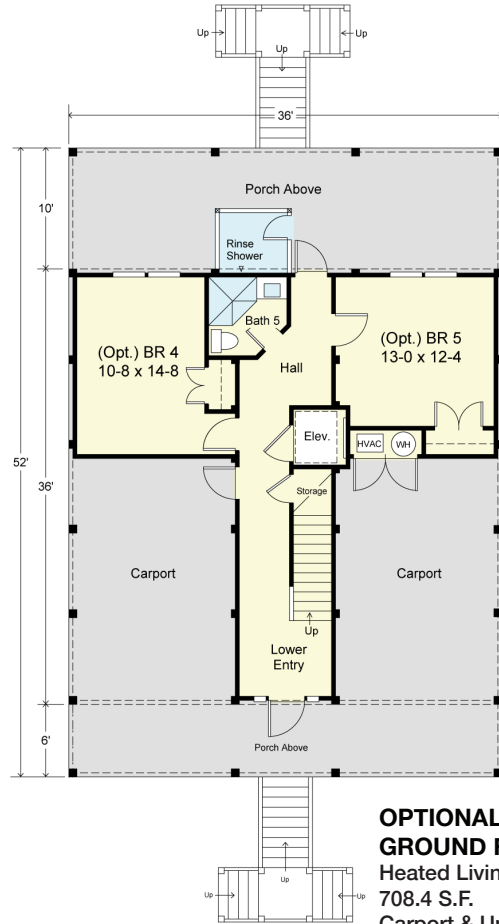
REAR



LEFT SIDE



GROUND FLOOR PLAN
Heated Living Area 299.7 S.F.
Carport & Unheated 996.3 S.F.



OPTIONAL GROUND FLOOR PLAN
Heated Living Area 708.4 S.F.
Carport & Unheated 587.6 S.F.

COASTAL DESIGNS

cottages for coastal living

web: coastaldesigns.com
email: designer@coastaldesigns.com

Copyright © 2003-2024, all rights reserved by Coastal Designs.
This plan depicts a sketch plan, designer reserves the right to make changes and modifications for improvements. Measurements and dimensions are approximate.

CAPE POINT 2429-5E

2,429.4 to 2,838.1 Square Feet Living Area
36'-0" wide x 52'-0" deep x 34'-8" high

Ground Floor Foyer	299.7 S.F. to 708.4 S.F.	3-5 Bedrooms 3-4 Baths 3 Levels Elevator
1st Floor	1,296.0 S.F.	
2nd Floor	833.7 S.F.	
Total Area	2,429.4 to 2,838.1 S.F.	