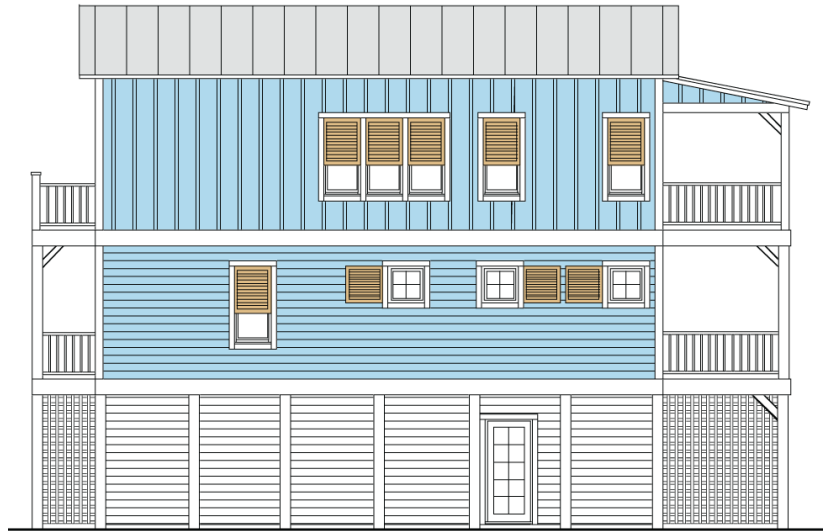


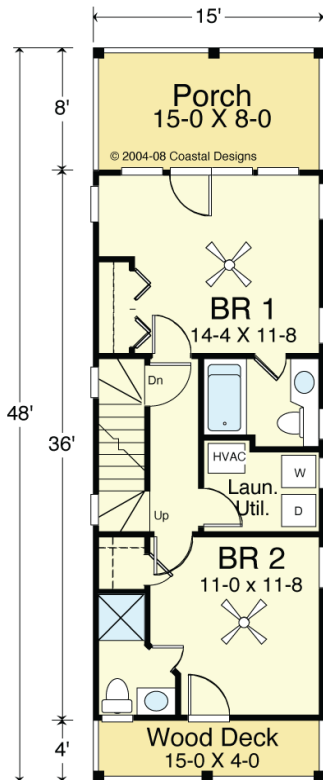
SAND CASTLE 1080-2



© 2004-08 Coastal Designs
WATER FRONT

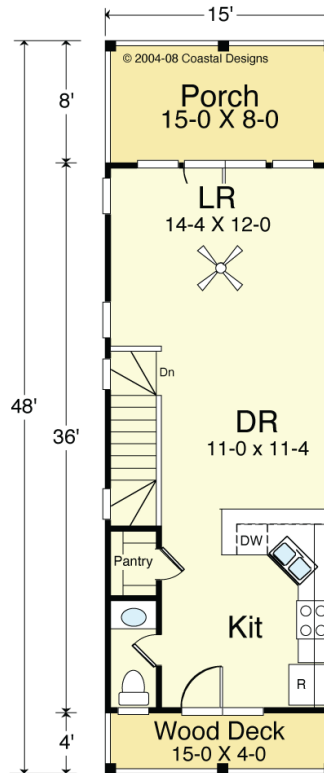


© 2004-08 Coastal Designs
RIGHT SIDE



FIRST FLOOR PLAN
Living Area = 540.0 S.F.
8'-0" Ceilings

Note: 1st Floor & 2nd Floor May Be Switched



SECOND FLOOR PLAN
Living Area = 540.0 S.F.
10'-0" Ceilings

COASTAL DESIGNS

cottages for coastal living

web: coastaldesigns.com
email: designer@coastaldesigns.com

Copyright © 2003-2024, all rights reserved by Coastal Designs.
This plan depicts a sketch plan, designer reserves the right to make changes and modifications for improvements. Measurements and dimensions are approximate.

SAND CASTLE 1080-2

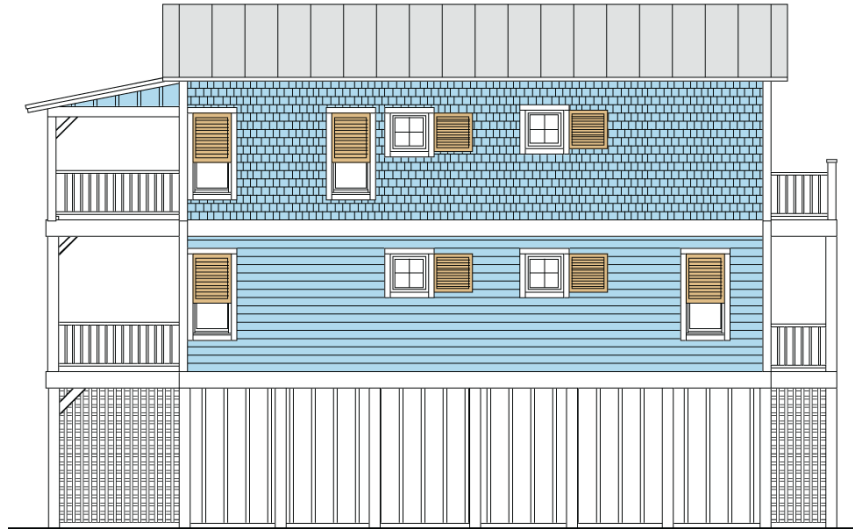
1,080 Square Feet Living Area
15'-0" wide x 48'-0" deep x 33'-6" high

| | | |
|--------------------------|---------------------|---------------------------|
| Ground Floor (Unheated) | 540.0 S.F. | 2 Bedrooms 2 1/2 Baths |
| 1st Floor | 540.0 S.F. | |
| 2nd Floor | 540.0 S.F. | |
| Total Living Area | 1,080.0 S.F. | |

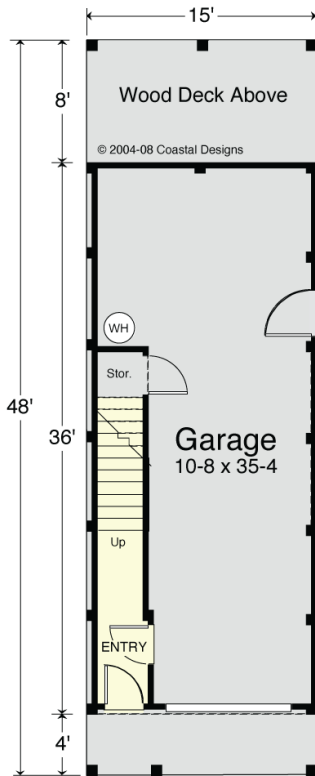
SAND CASTLE 1080-2



© 2004-08 Coastal Designs
STREET FRONT



© 2004-08 Coastal Designs
LEFT SIDE



GROUND FLOOR PLAN
Ground Floor Area (Unheated) = 540.0 S.F.
8'-0" Ceilings

Note: Garage Doors May Be On Front Or Rear,
Depending On Driveway Location

COASTAL DESIGNS

cottages for coastal living

web: coastaldesigns.com
email: designer@coastaldesigns.com

Copyright © 2003-2024, all rights reserved by Coastal Designs.
This plan depicts a sketch plan, designer reserves the right to make changes and modifications for improvements. Measurements and dimensions are approximate.

SAND CASTLE 1080-2

1,080 Square Feet Living Area
15'-0" wide x 48'-0" deep x 33'-6" high

| | | |
|--------------------------|---------------------|---------------------------|
| Ground Floor (Unheated) | 540.0 S.F. | 2 Bedrooms 2 1/2 Baths |
| 1st Floor | 540.0 S.F. | |
| 2nd Floor | 540.0 S.F. | |
| Total Living Area | 1,080.0 S.F. | |