

WRIGHTSVILLE 1962-4



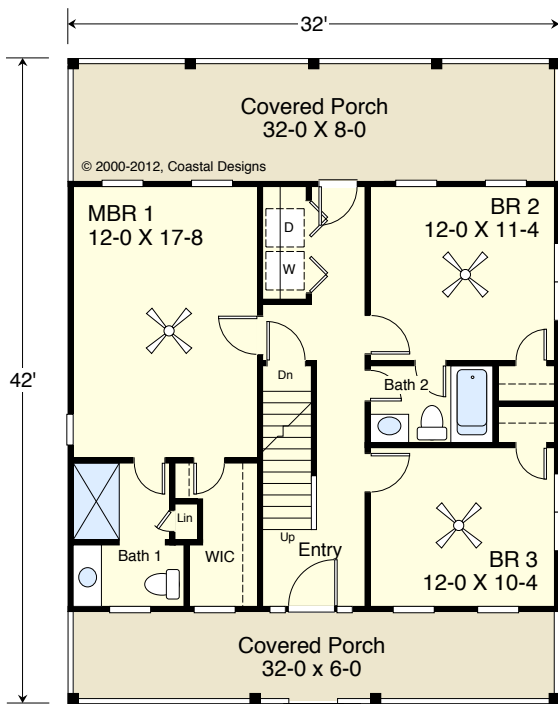
Water Front

© 2000-2012, Coastal Designs

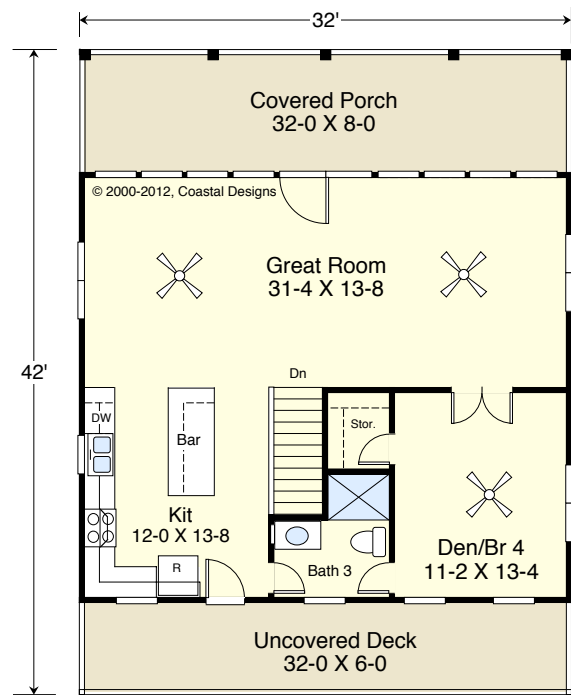


Right Side

© 2000-2012, Coastal Designs



First Floor
896.00 sf



Second Floor
896.00 sf

FLOOR AREAS:

Ground Floor	170.0 SF
1st Floor	896.0 SF
2nd Floor	896.0 SF
Total Area	1,962.0 SF

WRIGHTSVILLE 1962-4

1,962.0 square feet living area

4 bedrooms, 3 baths

32'-0" wide x 42' deep, roof height 38'-6"



COASTAL DESIGNS ...homes for coastal living

www.coastaldesigns.com · PO Box 379 · Wrightsville Beach · NC · 28480 · 910-509-3140 · Copyright © 2011, Coastal Designs
This plan depicts a sketch plan, designer reserves the right to make changes and modifications for improvements. Measurements and dimensions are approximate.

WRIGHTSVILLE 1962-4



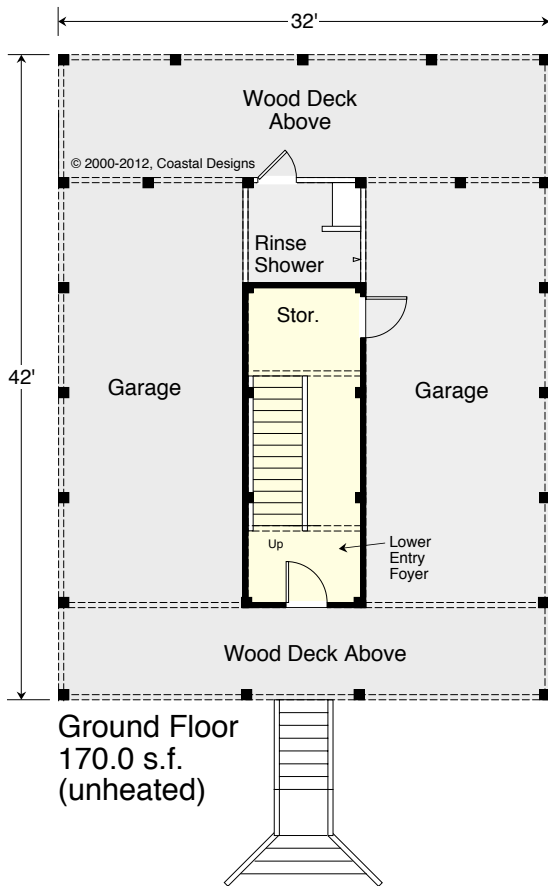
Street Front

© 2000-2012, Coastal Designs



Left Side

© 2000-2012, Coastal Designs



Ground Floor
170.0 s.f.
(unheated)

FLOOR AREAS:

Ground Floor	170.0 SF
1st Floor	896.0 SF
2nd Floor	896.0 SF
Total Area	1,962.0 SF

WRIGHTSVILLE 1962-4

1,962.0 square feet living area
4 bedrooms, 3 baths
32'-0" wide x 42' deep, roof height 38'-6"



COASTAL DESIGNS ...homes for coastal living

www.coastaldesigns.com · PO Box 379 · Wrightsville Beach · NC · 28480 · 910-509-3140 · Copyright © 2011, Coastal Designs
This plan depicts a sketch plan, designer reserves the right to make changes and modifications for improvements. Measurements and dimensions are approximate.