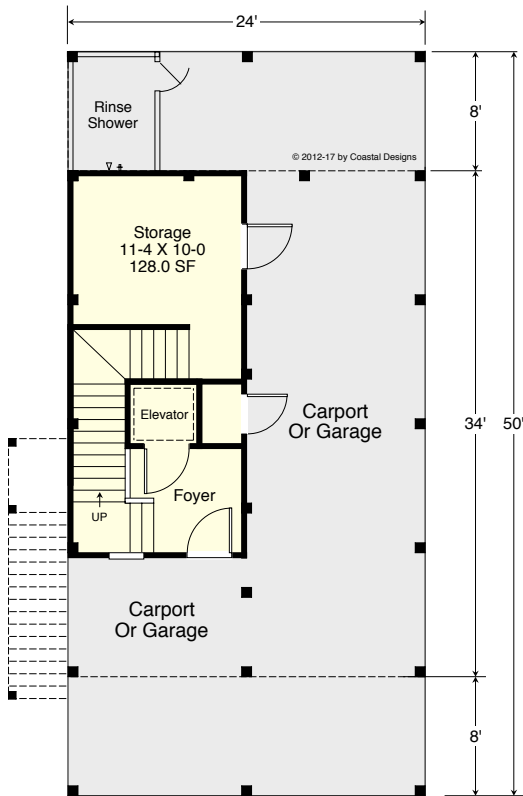


LOOKOUT 2479-4E

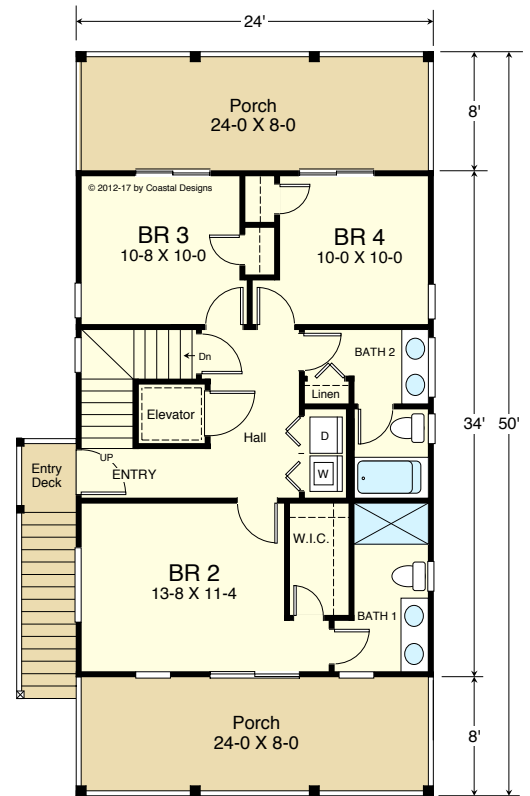


LEFT SIDE

STREET FRONT



GROUND FLOOR
 Entry 184.0 S.F.
 Storage 131.5 S.F.
 8' CEILINGS (+) ON THIS FLOOR



1ST FLOOR - 816.0 S.F.
 8' CEILINGS ON THIS FLOOR

LOOKOUT 2479-4E

2,294.6 (base) to 2,478.6 square feet living area
 4 bedrooms, 3 1/2 baths
 24'-0" wide x 50' deep
 roof height 40'-10"+

GROUND FLOOR = 184.0 S.F.
 FIRST FLOOR = 816.0 S.F.
 SECOND FLOOR = 816.0 S.F.
 THIRD FLOOR LOFT = 662.6 S.F.
 TOTAL HEATED = 2,479.6 S.F.



COASTAL DESIGNS ...cottages for coastal living

www.coastaldesigns.com · PO Box 379 · Wrightsville Beach · NC · 28480 · 910-616-6905 · Copyright © 2012-2017, Coastal Designs
 This plan depicts a sketch plan, designer reserves the right to make changes and modifications for improvements. Measurements and dimensions are approximate.

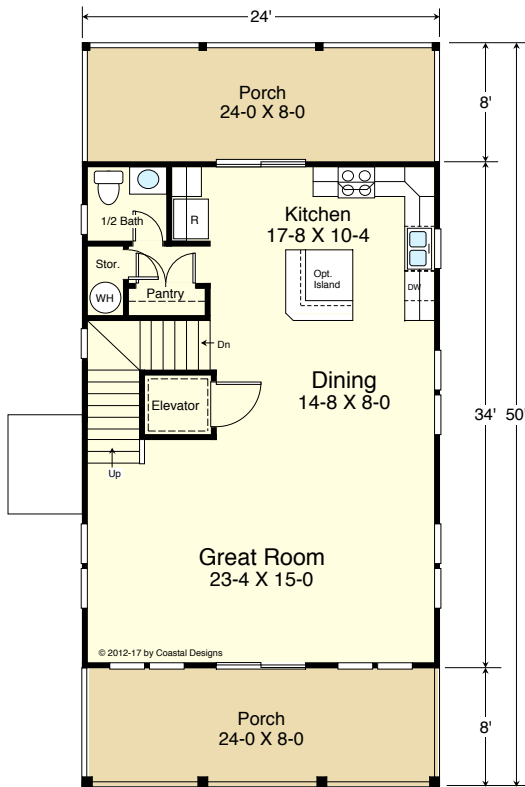
LOOKOUT 2479-4E



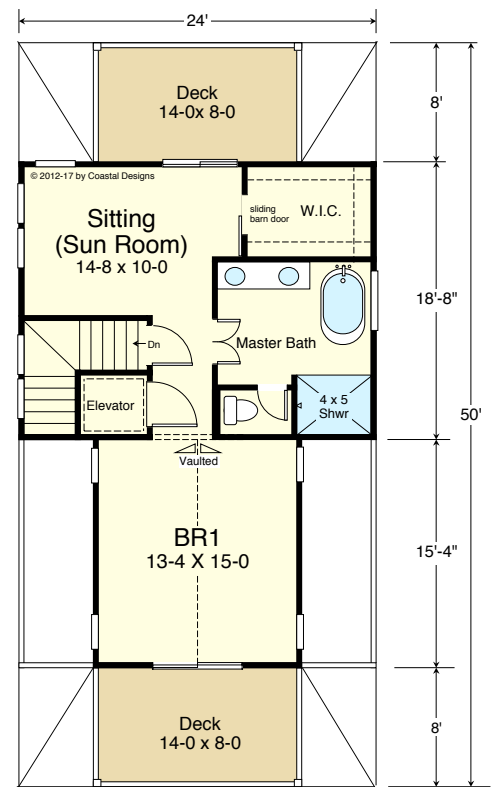
RIGHT SIDE



REAR



2ND FLOOR - 816.0 S.F.
9' FLAT CEILINGS ON THIS FLOOR



3RD FLOOR - 662.6 S.F.
8' FLAT + VAULTED CEILINGS

LOOKOUT 2479-4E

2,294.6 (base) to 2,478.6 square feet living area
4 bedrooms, 3 1/2 baths
24'-0" wide x 50' deep
roof height 40'-10"+

GROUND FLOOR = 184.0 S.F.
FIRST FLOOR = 816.0 S.F.
SECOND FLOOR = 816.0 S.F.
THIRD FLOOR LOFT = 662.6 S.F.
TOTAL HEATED = 2,479.6 S.F.



COASTAL DESIGNS ...cottages for coastal living

www.coastaldesigns.com · PO Box 379 · Wrightsville Beach · NC · 28480 · 910-616-6905 · Copyright © 2012-2017, Coastal Designs
This plan depicts a sketch plan, designer reserves the right to make changes and modifications for improvements. Measurements and dimensions are approximate.