

# HOLDEN BEACH 1744-4E



Street Front

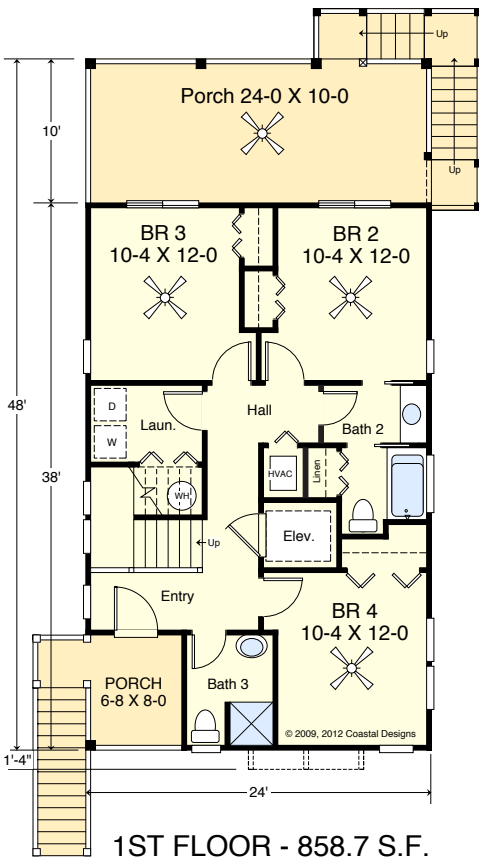
© 2009, 2012 Coastal Designs

Roof Ht. ± 34'-10"

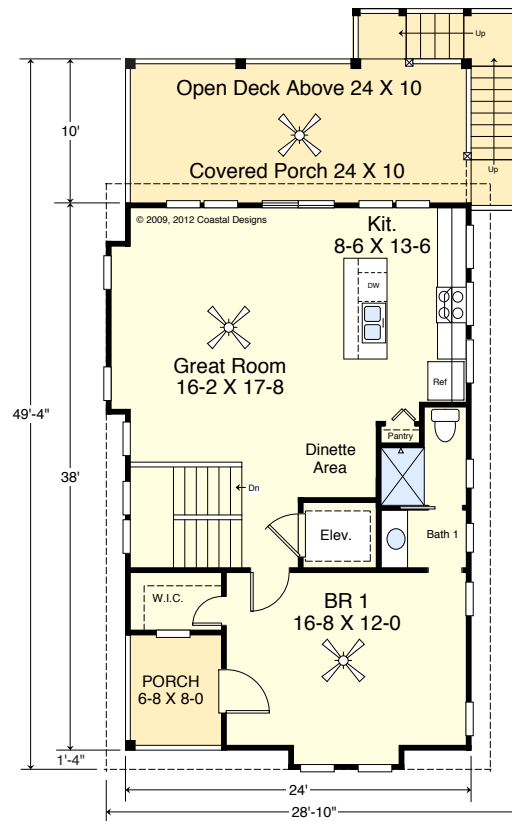


Right Side

© 2009, 2012 Coastal Designs



1ST FLOOR - 858.7 S.F.  
8' FLAT CEILINGS



2ND FLOOR - 885.3 S.F.  
9' FLAT CEILINGS



**COASTAL  
DESIGNS**

cottages for coastal living

www.coastaldesigns.com  
PO Box 379 · Wrightsville Beach · NC · 28480 ·  
910-616-6905

Copyright © 2003-2019, Coastal Designs

This plan depicts a sketch plan, designer reserves the right to make changes and modifications for improvements. Measurements and dimensions are approximate.

## HOLDEN BEACH 1744-4E

1,744.0 square feet living area  
4 bedrooms, 3 baths, 2 levels, Elevator  
31'-0" wide x 58'-10" deep x 34'-10" high  
First Floor = 858.7 S.F.  
Second Floor = 885.3 S.F.  
Total = 1,744.0 S.F.  
Carport = 726.0 S.F.

# HOLDEN BEACH 1744-4E



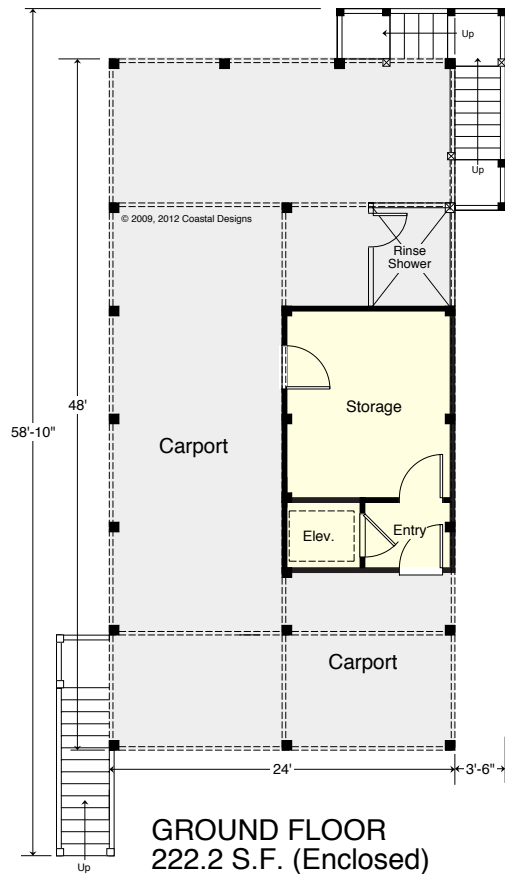
Water Front

© 2009, 2012 Coastal Designs



Left Side

© 2009, 2012 Coastal Designs



**COASTAL  
DESIGNS**

cottages for coastal living

www.coastal designs.com

PO Box 379 · Wrightsville Beach · NC · 28480 ·

910-616-6905

Copyright © 2003-2019, Coastal Designs

This plan depicts a sketch plan, designer reserves the right to make changes and modifications for improvements. Measurements and dimensions are approximate.

## HOLDEN BEACH 1744-4E

1,744.0 square feet living area  
4 bedrooms, 3 baths, 2 levels, Elevator  
31'-0" wide x 58'-10" deep x 34'-10" high

First Floor 858.7 S.F.

Second Floor 885.3 S.F.

Total 1,744.0 S.F.

Carport 726.0 S.F.