

WRIGHTSVILLE 1904-4E



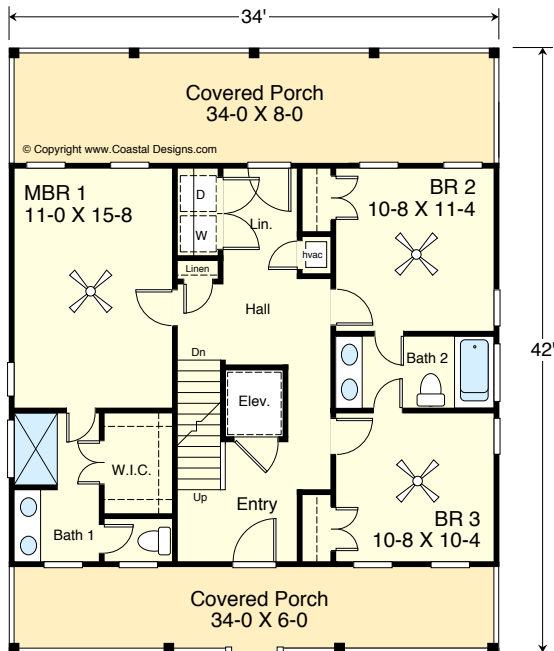
Water Front

© Copyright www.Coastal Designs.com

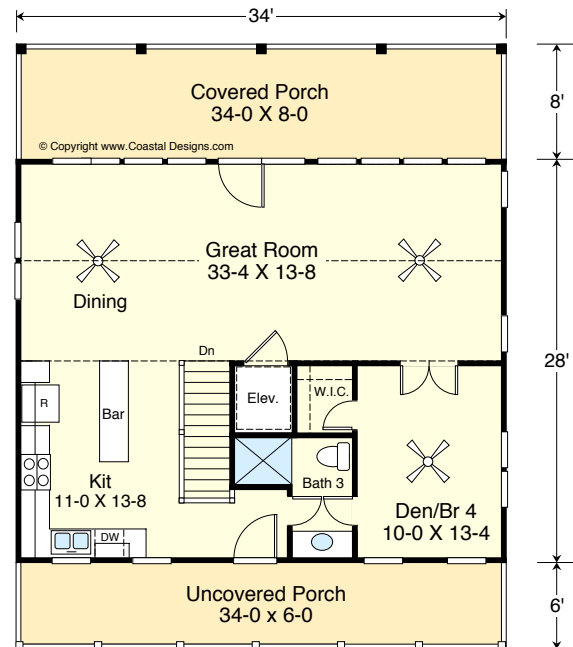
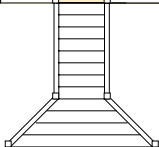


Right Side

© Copyright www.Coastal Designs.com



1st Floor
952.0 sf



2nd Floor
952.0 sf



**COASTAL
DESIGNS**

cottages for coastal living

www.coastaldesigns.com
PO Box 379 · Wrightsville Beach · NC · 28480 ·
910-616-6905

Copyright © 2003-2019, Coastal Designs

This plan depicts a sketch plan, designer reserves the right to make changes and modifications for improvements. Measurements and dimensions are approximate.

WRIGHTSVILLE 1904-4E

1,904 square feet living area
4 bedrooms, 3 baths, 3 levels, Elevator
34'-0" wide x 42'-0" deep x 38'-6" high

Floor Areas:

Ground Floor	=	240.0 S.F.
1st Floor	=	952.0 S.F.
Second Floor	=	952.0 S.F.
Total	=	1,904.0 S.F.

WRIGHTSVILLE 1904-4E



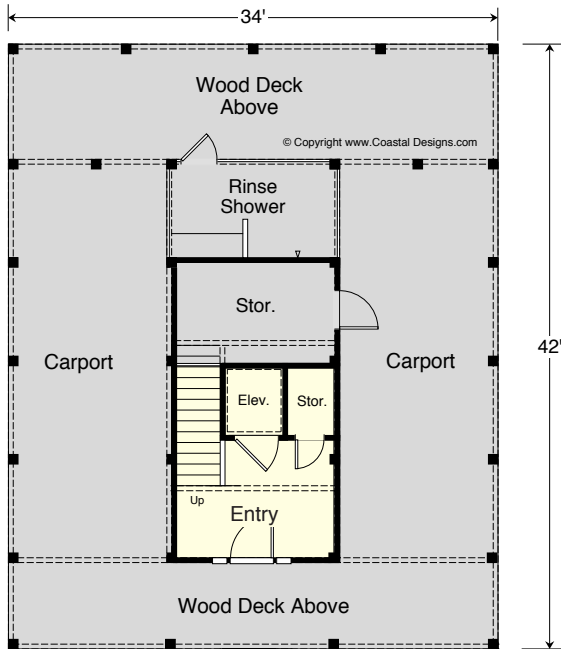
Street Front

© Copyright www.Coastal Designs.com

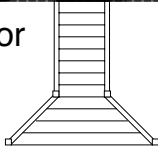


Left Side

© Copyright www.Coastal Designs.com



Ground Floor
240.0 s.f.
(unheated)



**COASTAL
DESIGNS**

cottages for coastal living

www.coastaldesigns.com

PO Box 379 · Wrightsville Beach · NC · 28480 ·

910-616-6905

Copyright © 2003-2019, Coastal Designs

This plan depicts a sketch plan, designer reserves the right to make changes and modifications for improvements. Measurements and dimensions are approximate.

WRIGHTSVILLE 1904-4E

1,904 square feet living area

4 bedrooms, 3 baths, 3 levels, Elevator

34'-0" wide x 42'-0" deep x 38'-6" high

Floor Areas:

Ground Floor = 240.0 S.F.

1st Floor = 952.0 S.F.

Second Floor = 952.0 S.F.

Total = 1,904.0 S.F.